

CSAH 39 TRAIL AND IMPROVEMENT PROJECT



September 17, 2025

PROJECT CONTACTS

Consultant Engineer

Stonebrooke Engineering, Inc.
12279 Nicollet Avenue,
Burnsville, MN 55337
(952)-402-9202

John Brunkhorst
Project Engineer
(320) 583-0909
jbrunkhorst@stonebrooke
engineering.com

John Chmielewski
Onsite Project Representative
(952) 395-5308
jchmielewski@stonebrooke
engineering.com

City of Monticello

Public Works
909 Golf Course Road
Monticello MN 55362

Ryan Melhouse
Assistant City Engineer
(763) 271-3227
Ryan.Melhouse@MonticelloMN.gov

Matt Leonard
PW Director/City Engineer
(763)271-3271
Matt.Leonard@MonticelloMN.gov

Contractor

Thomas and Sons Construction, Inc.
Darren Leidall, Project Superintendent
(612) 834-3955
Darren.thomasandsons@gmail.com

PROJECT CONSTRUCTION OVERVIEW

The project is planned for CSAH 39 (Golf Course Road) from Elm Street to Bridge #86802 located just west of 7th Street West.

This project will include:

- Constructing a 10-foot-wide bituminous trail on the north side of CSAH 39.
- Completely reconstructing the bituminous surface on CSAH 39 from Elm Street to Bridge #86802.
- The north side of CSAH 39 will have a curb and gutter system added, with a drainage pond located on the south side of the project near the City of Monticello yard.

Contractor: Thomas and Sons Construction, Inc.

Project Timeline:

- **Start Date:** Week of September 22, 2025
- **Completion Date:** June 26, 2026 (*subject to change*)
- **Working Hours:** 7 a.m. to 7 p.m., Monday through Saturday

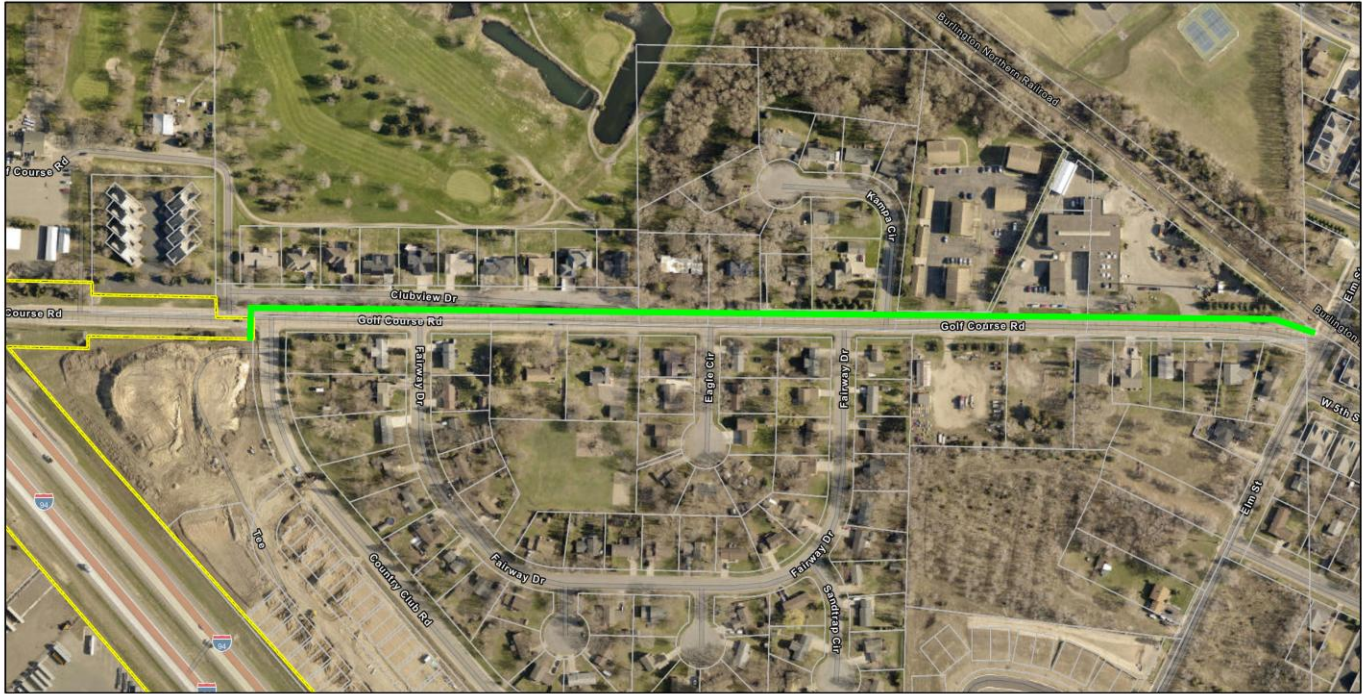
Traffic and Access Information:

- Beginning on Monday September 22, 2025, the contractor will close CSAH 39 from Elm Street to 7th Street West. Local traffic will continue to have access to and from residences and local businesses.
- The detour will take traffic south on Elm Street to 7th Street West.
- No parking will be allowed on Clubview Drive the week of September 22, 2025, to allow for removal of trees along the boulevard. New trees will be placed as part of the project.
- Residents will be notified of full road closures as storm sewer pipe installation requires intersection closures at Kampa Circle/CSAH 39 and Fairway Drive/CSAH 39. These will be short-duration day closures and accommodation for vehicle parking along CSAH 39 will be made.
- Access to driveways will be maintained, although some driveway entrances within the street right-of-way may be partially removed and replaced as new street surfaces and sewer crossings are constructed.
- Temporary access restrictions may occur as the project progresses past driveways and intersections.
- Fence removals will start to take place on Monday, September 22, 2025. If you have a pet, please be aware they may not have containment in areas affected by these fence removals.

We understand that construction can be disruptive, and we will do our best to maintain traffic flow. However, some delays and inconveniences will be unavoidable. Your patience and understanding are greatly appreciated.

PROJECT AREA

CSAH 39 Trail



City Boundary
Parcels

Proposed Trail

1 in = 292 Ft



September 20, 2024
Map Powered By Datafi
wsb

QUESTIONS

If you have any questions or concerns regarding your specific property or the construction, please call John Chmielewski. For other project questions, please call John Brunkhorst or Ryan Melhouse. Project contact information is provided on the first page.