

PROJECT OVERVIEW

PROCESS AND SCHEDULE

DRAFT MASTER PLAN

PROJECT SCHEDULE 2019

	APR	MAY	JUN	JUL	AUG	SEP	OCT	NOV
Phase 1: Project Organization								
Project team will complete site analysis, mapping, and review background information								
Phase 2: Explore Alternatives								
Online Engagement: Online survey and interactive mapping application			Monticello Walk and Roll	Bertram Blast	Clearwater Heritage Days	WE ARE HERE		
Pop-up Meetings: booths at local events to solicit input from the public			●	●	●	●		
Public Open House: Meeting to invite the public to review project ideas and materials						● Open House		
Phase 3: Develop Draft and Final Plan								
Assemble draft plan								
Master plan presentations to county and city park commissions and councils								
Master plan submittal to Greater Minnesota Regional Parks and Trails Commission for regional designation								●

GMRPTC INFORMATION AND CLASSIFICATION

Wright County, in partnership with the cities of **Clearwater, Monticello, and Otsego**, is working on a master plan for the proposed Great River Regional Trail. The trail is envisioned as an off-road, paved, non-motorized destination trail for walking, running, bicycling, and inline skating.



The trail will provide visual and physical connections to the Mississippi River where feasible and may be linked to the Mississippi River state water trail to provide a **canoe/kayak and bicycle loop route**. Additional amenities and facilities along the trail may include campsites, trailheads, cultural interpretation, wayfinding signage, rest stops, and connections to local destinations.



The master plan will be developed to meet **Greater Minnesota Regional Parks and Trails Commission (GMRPTC)** requirements and will include: a planned trail route to inform future decisions related to trail development and acquisition, an ecological/land resources plan, a programming plan, an operations and management plan, and a sustainability plan. Learn more about the GMRPTC here: <https://www.gmrptccommission.org/>

The **Great River Regional Trail** is envisioned as a **non-motorized regional destination trail** that will connect the residents of northern Wright County to the Mississippi River and surrounding regional trail connections. Strategically located to fill a **thirty mile gap** in the regional and statewide trail system, the Great River Regional Trail will provide connections to and between existing and planned trails, including:

- Stearns County's Beaver Island and Lake Wobegon Trails
- Three Rivers Park District's and Wright County's Crow River Regional Trail
- Elk River's Great Northern Trail
- Three Rivers Park District's West Mississippi Trail
- DNR's Luce Line State Trail which passes through Hennepin, Carver, McLeod, and Meeker counties

NEXT STEPS

- Gather public input from tonight's meeting
- Prepare draft master plan document
- Present master plan to city and county commissions During November 2019
- Submit master plan to Greater MN Regional Park and Trails Commission for Regional designation in December 2019

PUBLIC VALUES

The 2018 Wright County Health Survey identified several issues related to public health that may be impacted by future use of the Great River Regional Trail. When asked what public health issues are problems for county residents, survey respondents' top three issues were: distracted driving (83% moderate or serious issue), obesity (66%), and lack of physical activity (65%). These three issues can all be impacted by trail use. In spite of knowing the dangers, Wright County residents continue to engage in behaviors behind the wheel that put themselves and others in danger (it is seen as more of a problem today than in 2015). While not condoning the behavior, separated trails will improve safety for pedestrians and cyclists in Wright County. Trails can help provide a venue for increased physical activity, whether that is active living (incorporating activity into everyday tasks like getting to school) or dedicated exercise time.

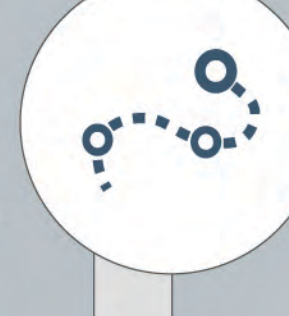
VISION THE GREAT RIVER REGIONAL TRAIL WILL:



Connect people to the outdoors by creating a safe bicycling and walking route with multiple access points and viewsheds for the residents and visitors to northern Wright County to regional and local trails, parks, and outdoor destinations.



Take care of what we have by preserving, conserving, and managing wildlife habitat and natural resources along the vital Mississippi River corridor.



Coordinate among partners by engaging the cities of Otsego, Monticello, and Clearwater; the townships of Monticello and Silver Creek; local outdoor enthusiasts and stakeholders; and the general public; and link those partners with a regional trail corridor that fills a 30+ mile gap in the regional and statewide trail network connecting the twin cities metro area to St. Cloud.



Acquire land and create new opportunities for outdoor recreation by preserving a recreational and natural corridor in advance of continued growth and development in Wright County.



Attract trail users by effectively marketing the trail corridor to entice tourists, outdoor adventurers, and spur economic development along the trail, as a segment of the MRT.

TRENDS IN RECREATION

OUTDOOR ADVENTURE & RECREATION



INTEREST IN HISTORY & CULTURE



- Stories of pre-settlement, native populations and tribal groups
- Early European settlements, wagon roads, ferry crossings
- Historic events (i.e. Battle Rapids Park)
- Railroad development
- Geologic history, shaping of the landscape
- Mississippi River, industry, locks and dams, the source and the mouth of the river, tributaries
- The Great River Road tourism, transportation to the Gulf of Mexico
- Wildlife habitat, ecology of water and land animals and plants
- Water resources as a source of drinking water, storm sewer outlets, transportation
- River recreation - fishing, boating, camping
- Public health and active living on the trail and within parks

AGING POPULATION



PHYSICAL & MENTAL HEALTH



TRAILS AND WAYFINDING



POPULATION GROWTH



GREAT RIVER REGIONAL TRAIL
OPEN HOUSE | SEPTEMBER 2019



REGIONAL CONTEXT MAP

REGIONAL TRAIL CONNECTIONS

DRAFT MASTER PLAN

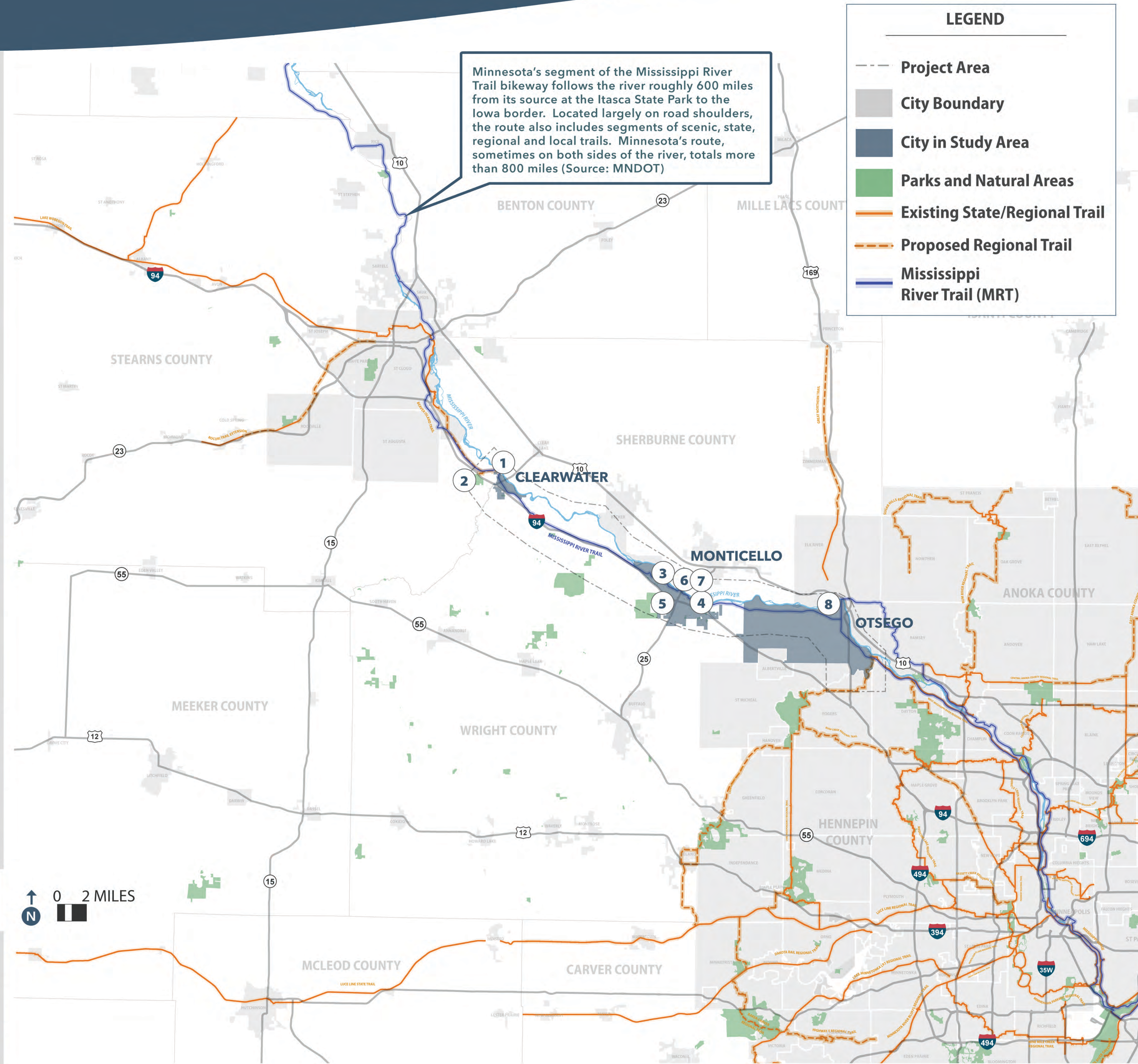
1 RIVERSIDE PARK, CLEARWATER MN



2 WARNER LAKE COUNTY PARK, CLEARWATER MN



3 MONTICELLI COUNTY PARK, MONTICELLO MN



4 SWAN PARK, MONTICELLO MN



5 OTTER CREEK PARK, MONTICELLO MN



6 WEST BRIDGE PARK, MONTICELLO MN



7 EAST BRIDGE PARK, MONTICELLO MN



8 OTSEGO COUNTY PARK, OTSEGO MN



WHAT WE HEARD

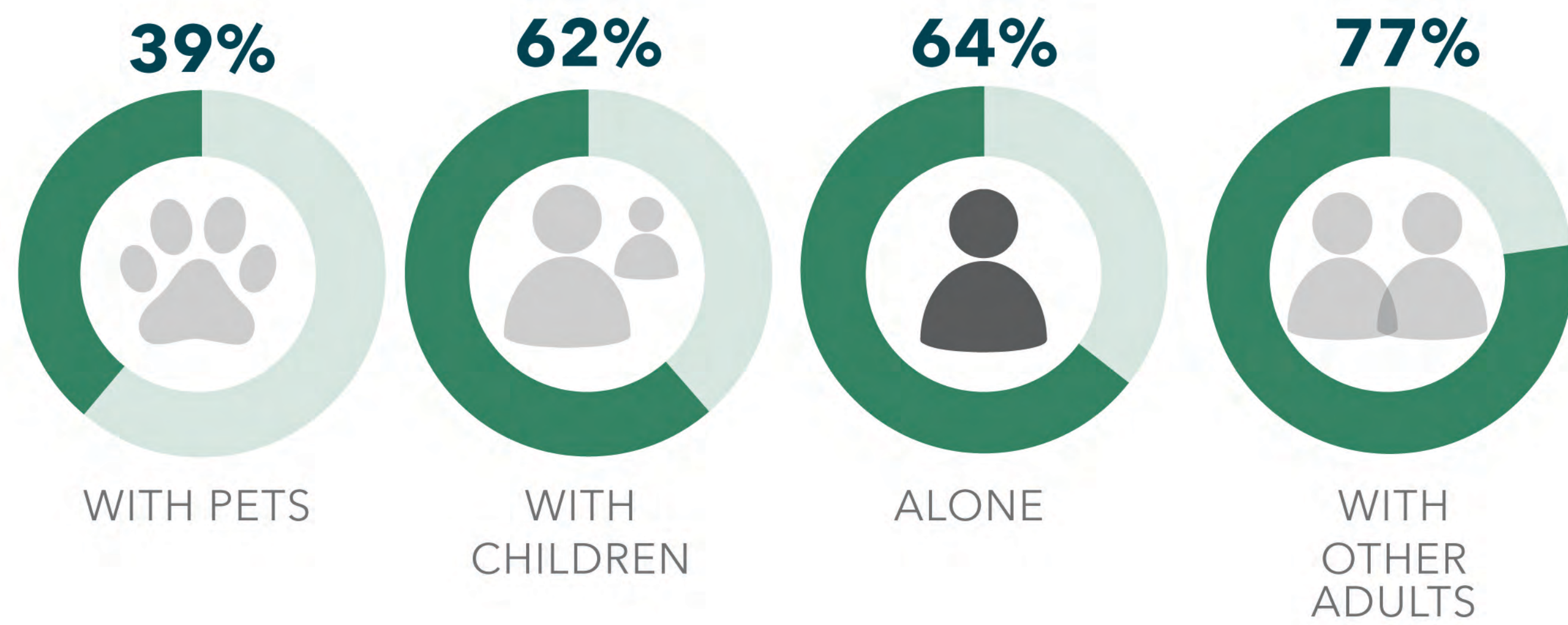
SUMMARY OF PUBLIC ENGAGEMENT

DRAFT MASTER PLAN

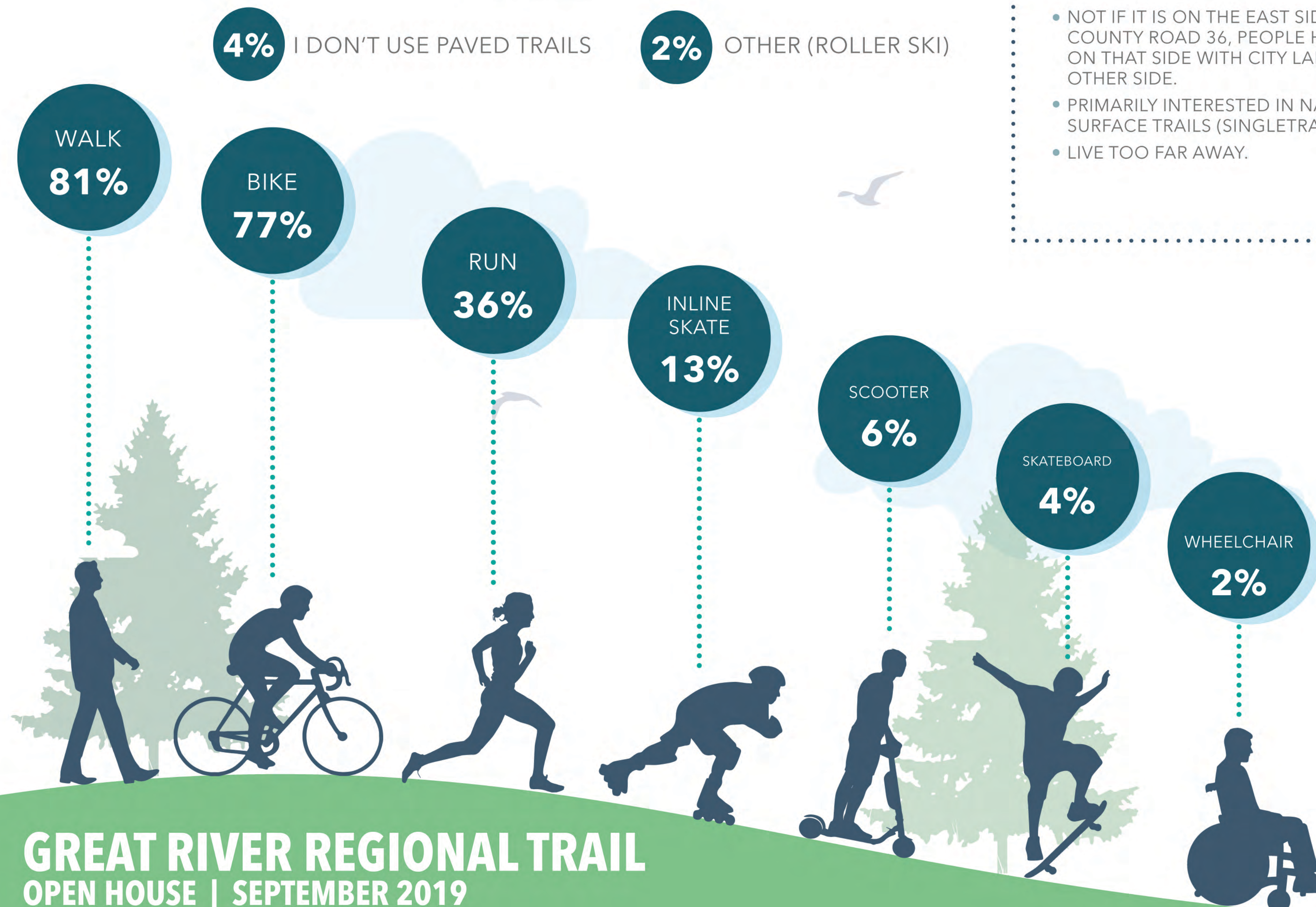
SURVEY MONKEY RESULTS

195 RESPONDENTS

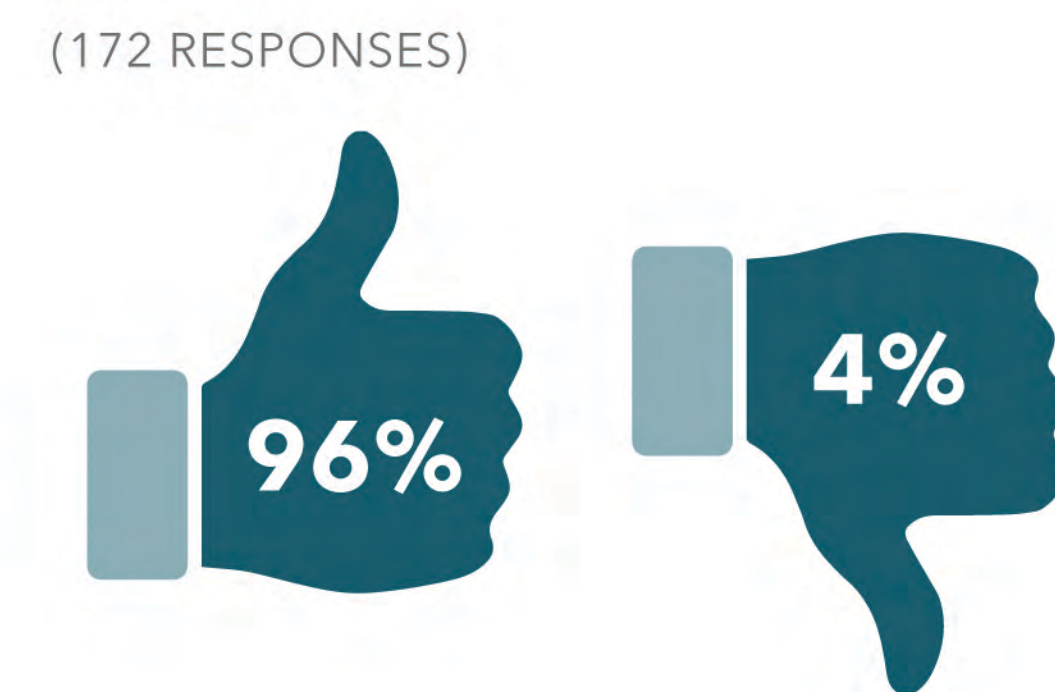
HOW ARE PEOPLE CURRENTLY USING THE TRAILS? (188 RESPONSES)



HOW ARE PEOPLE USING EXISTING PAVED TRAILS (195 RESPONSES)



IF THIS TRAIL IS CONSTRUCTED, HOW MANY WOULD USE IT? IF NO, WHY NOT? (172 RESPONSES)



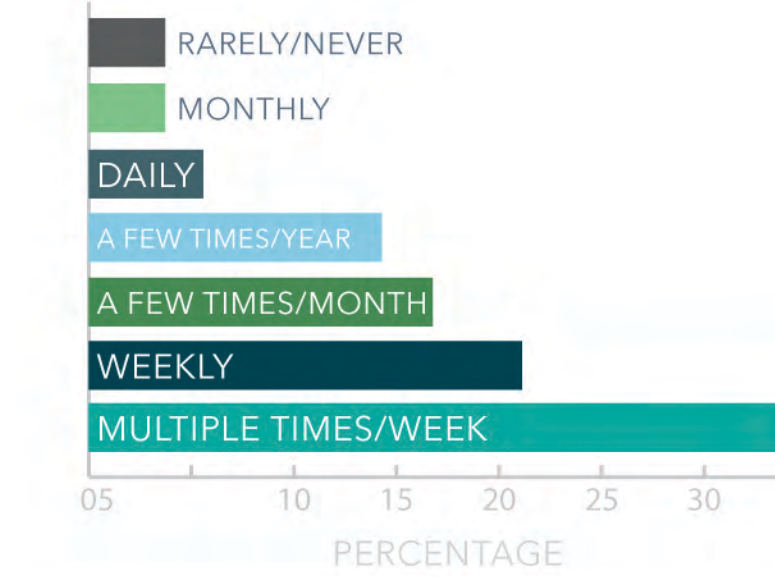
COMMENTS:

- NOT IF IT IS ON THE EAST SIDE OF COUNTY ROAD 36, PEOPLE HAVE YARDS ON THAT SIDE WITH CITY LAND ON THE OTHER SIDE.
- PRIMARILY INTERESTED IN NATURAL SURFACE TRAILS (SINGLETRACK)
- LIVE TOO FAR AWAY.

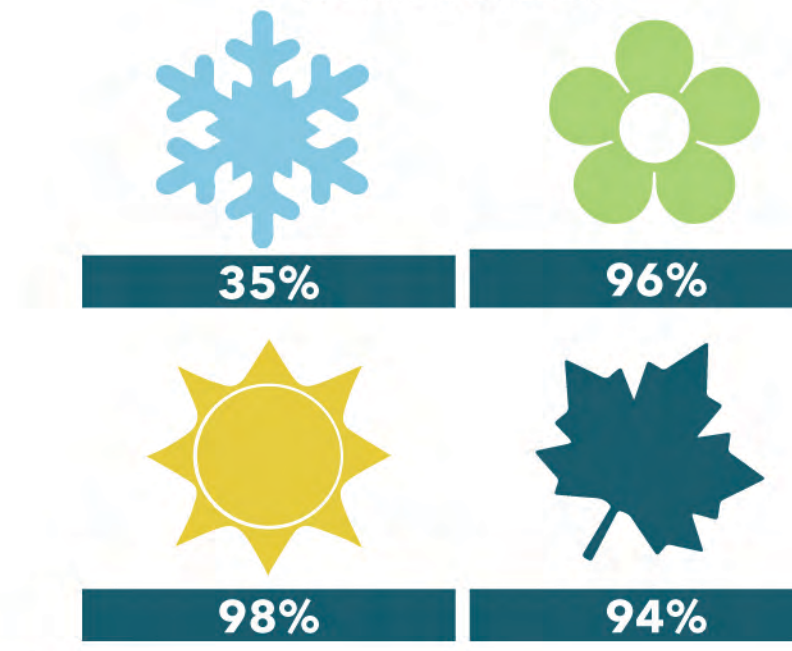


RESPONDENTS WHO USE THE TRAILS TO WALK/RUN SAID:

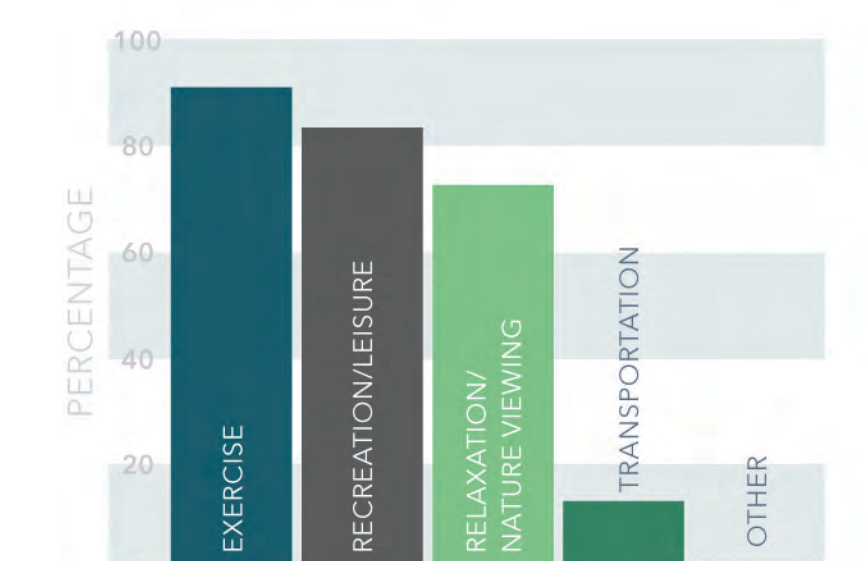
HOW OFTEN DO YOU USE THE TRAILS TO WALK/RUN? (164 RESPONSES)



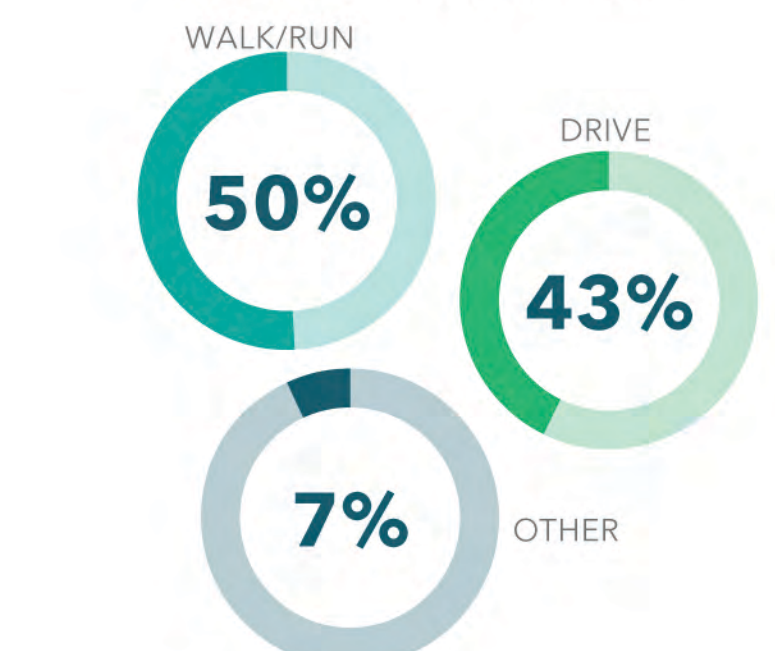
WHAT SEASONS DO YOU USE TRAILS TO WALK/RUN? (CHECK ALL THAT APPLY) (151 RESPONSES)



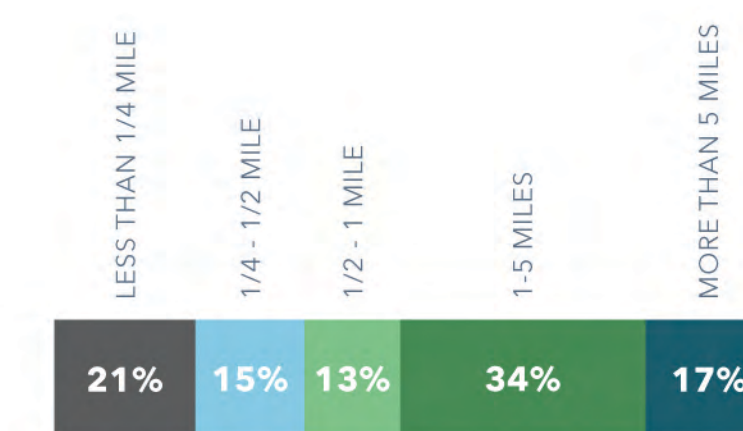
WHY DO YOU WALK OR RUN ON TRAILS? (SELECT ALL THAT APPLY) (161 RESPONSES) OTHER (BIRDWATCHING)



HOW DO YOU USUALLY GET TO THE TRAIL? (162 RESPONSES) OTHER (BIKE/BOTH BIKE AND WALK/RUN)



HOW FAR DO YOU GO TO GET TO THE TRAIL? (161 RESPONSES)

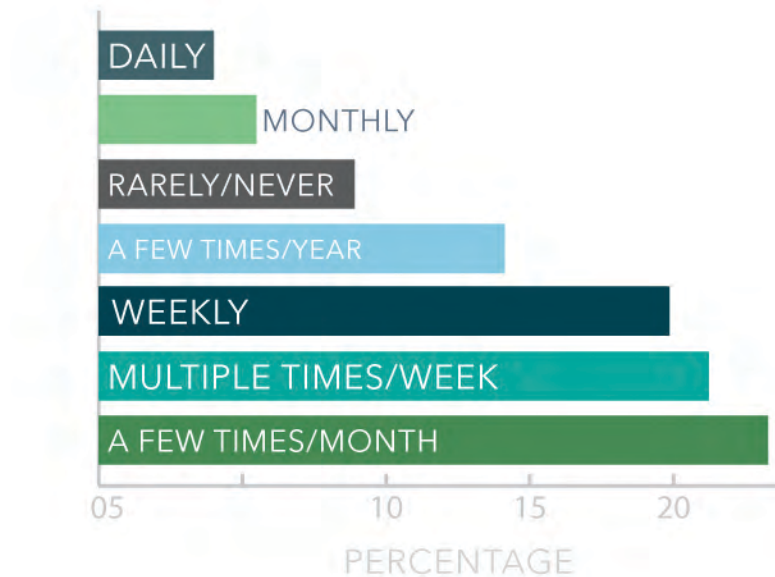


HOW FAR DO YOU USUALLY WALK/RUN ONCE YOU ARE ON THE TRAIL? (161 RESPONSES)

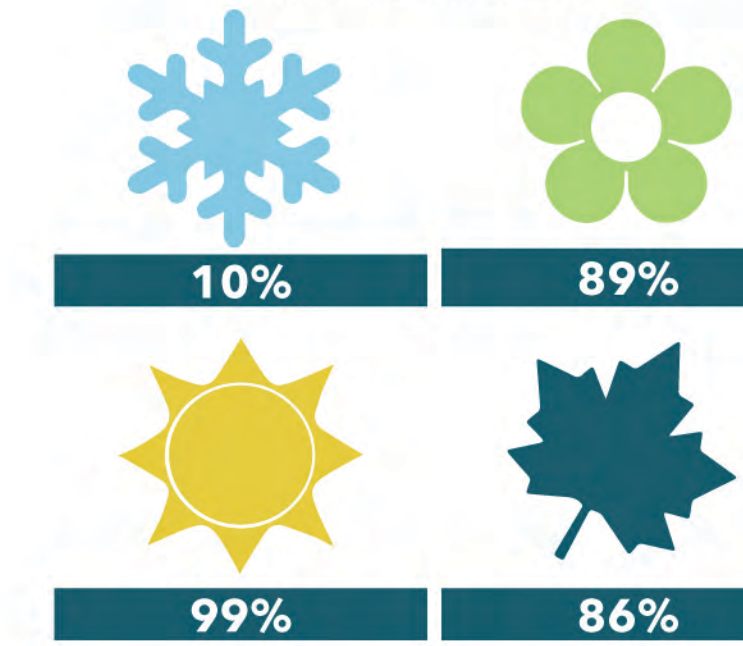


RESPONDENTS WHO USE THE TRAILS TO BIKE SAID:

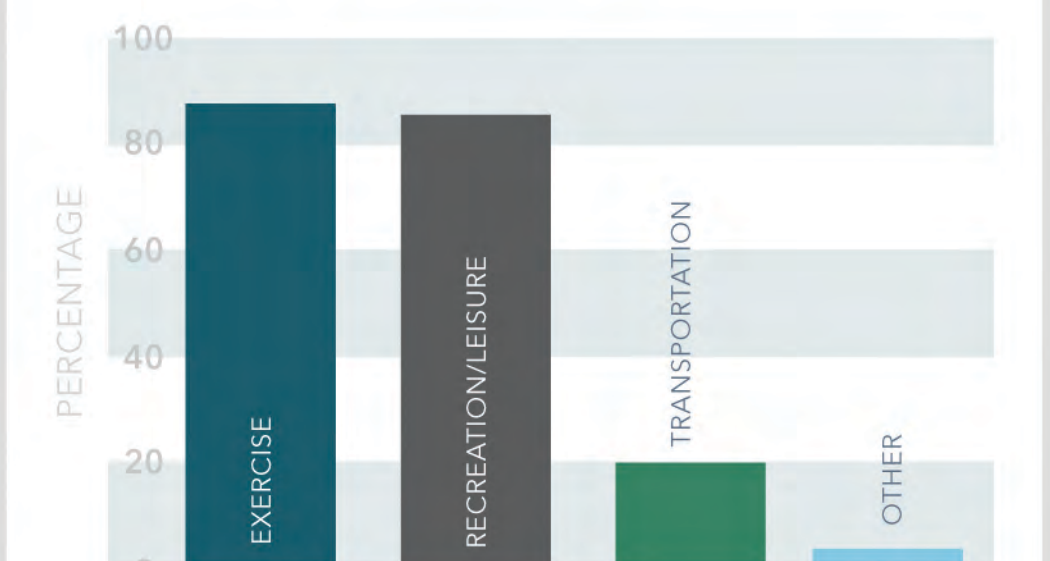
HOW OFTEN DO YOU USE THE TRAILS TO BIKE? (140 RESPONSES)



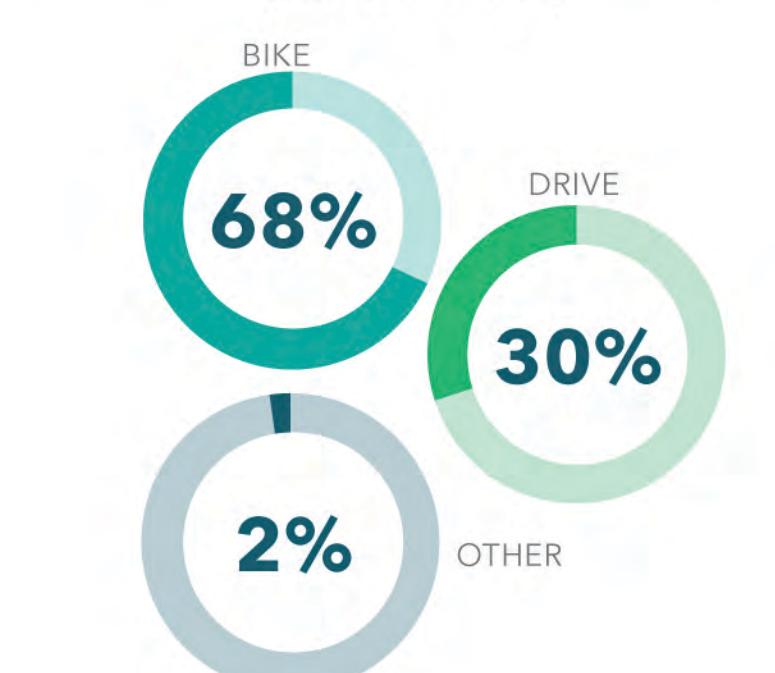
WHAT SEASONS DO YOU USE TRAILS TO BIKE? (CHECK ALL THAT APPLY) (140 RESPONSES)



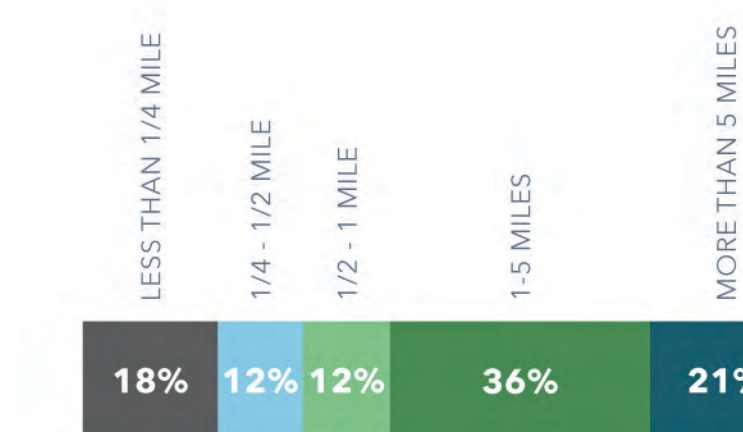
WHY DO YOU BIKE ON TRAILS? (SELECT ALL THAT APPLY) (141 RESPONSES) OTHER (SOCIAL ACTIVITY, TRAINING)



HOW DO YOU USUALLY GET TO THE TRAIL? (140 RESPONSES)



HOW FAR DO YOU GO TO GET TO THE TRAIL? (141 RESPONSES)



HOW FAR DO YOU USUALLY BIKE ONCE YOU ARE ON THE TRAIL? (140 RESPONSES)



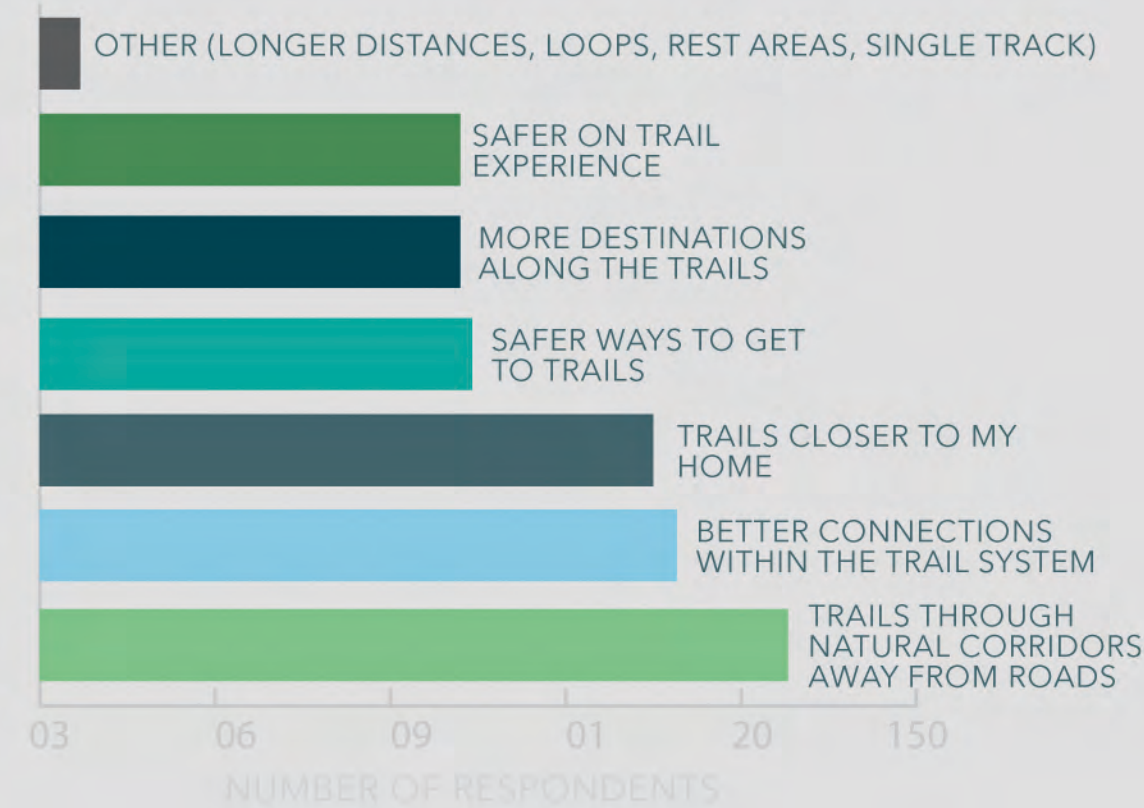
WHAT WE HEARD

SUMMARY OF PUBLIC ENGAGEMENT

DRAFT MASTER PLAN

SURVEY MONKEY RESULTS

FACTOR OR FACTORS THAT WOULD ENTICE POTENTIAL USERS TO USE PAVED TRAILS MORE? (173 RESPONSES)



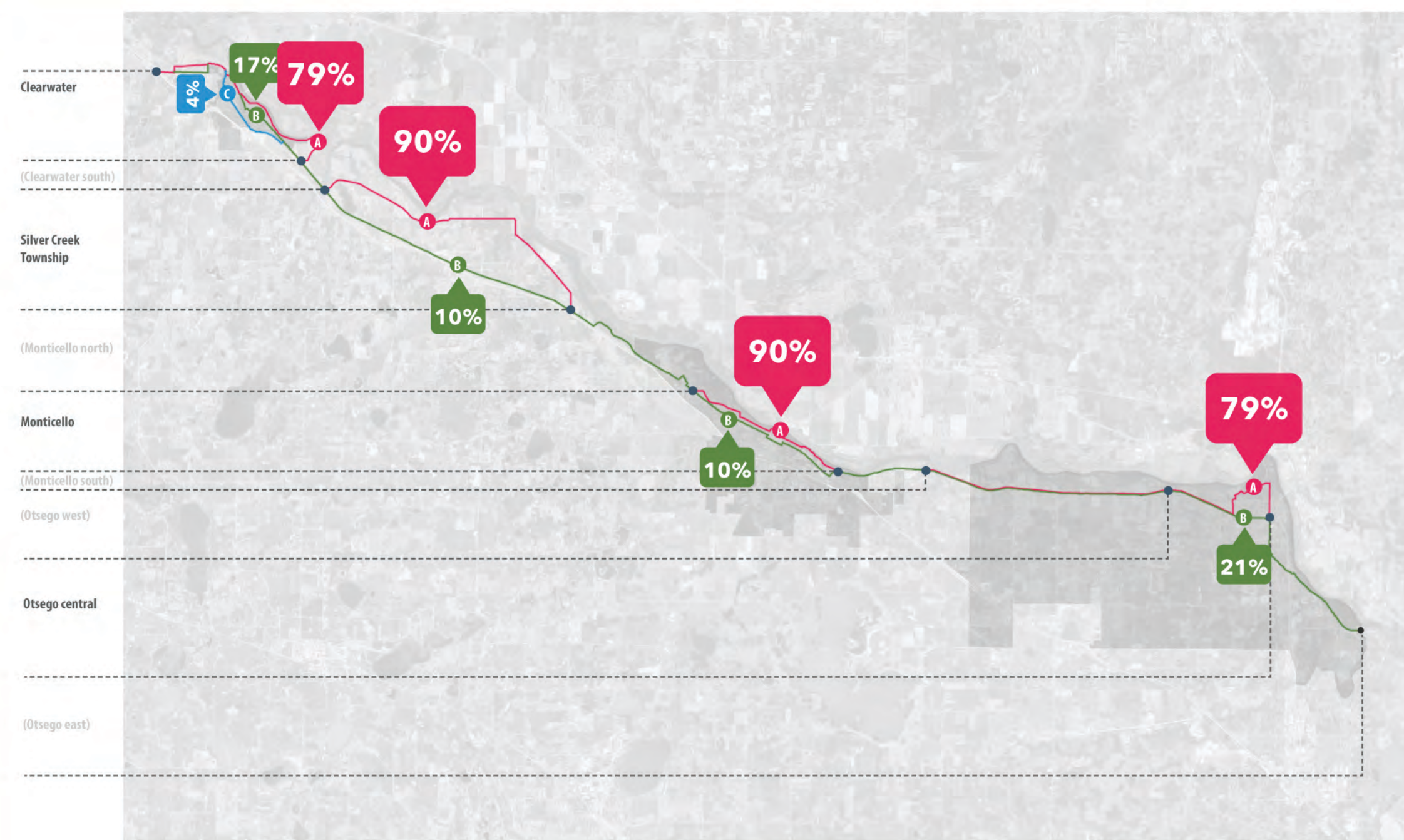
WHAT DESTINATIONS WOULD USERS LIKE TO BE ABLE TO GET TO BY TRAIL? (133 RESPONSES)

river access points, fishing spots, coffee shop, shopping, viewing, restaurants, River Parks trail, Parks river access, nice points, scenic, schools

DURING THE WINTER, PAVED TRAILS SHOULD: (168 RESPONSES)



TRAIL ROUTE COMMENTS



"PARKING OPTIONS AND BATHROOM STOPS ARE A MUST FOR THOSE OF US THAT BIKE/RUN LONG DISTANCES. HAVING BATHROOM OPTIONS IN WINTER IS ALSO IMPORTANT. MILE MARKERS WOULD ALSO BE APPRECIATED BOTH FOR ROUTE FINDING BUT ALSO SAFETY."

"TIE TO OTHER REGIONAL TRAILS."

"WHAT ABOUT A SIDE TRAIL FOR HORSEBACK RIDING?"

"SOME PARTS OF THE PROPOSED TRAIL RUN ALONG HIGHWAYS. WILL THESE USE THE PAVED SHOULDER AS THE TRAIL? OR WILL TRAIL BE SET BACK FROM THE ROAD? IF THE SHOULDER IS USED, CAN THE SPEED LIMIT BE REDUCED TO MAKE IT SAFER FOR TRAIL USERS?"

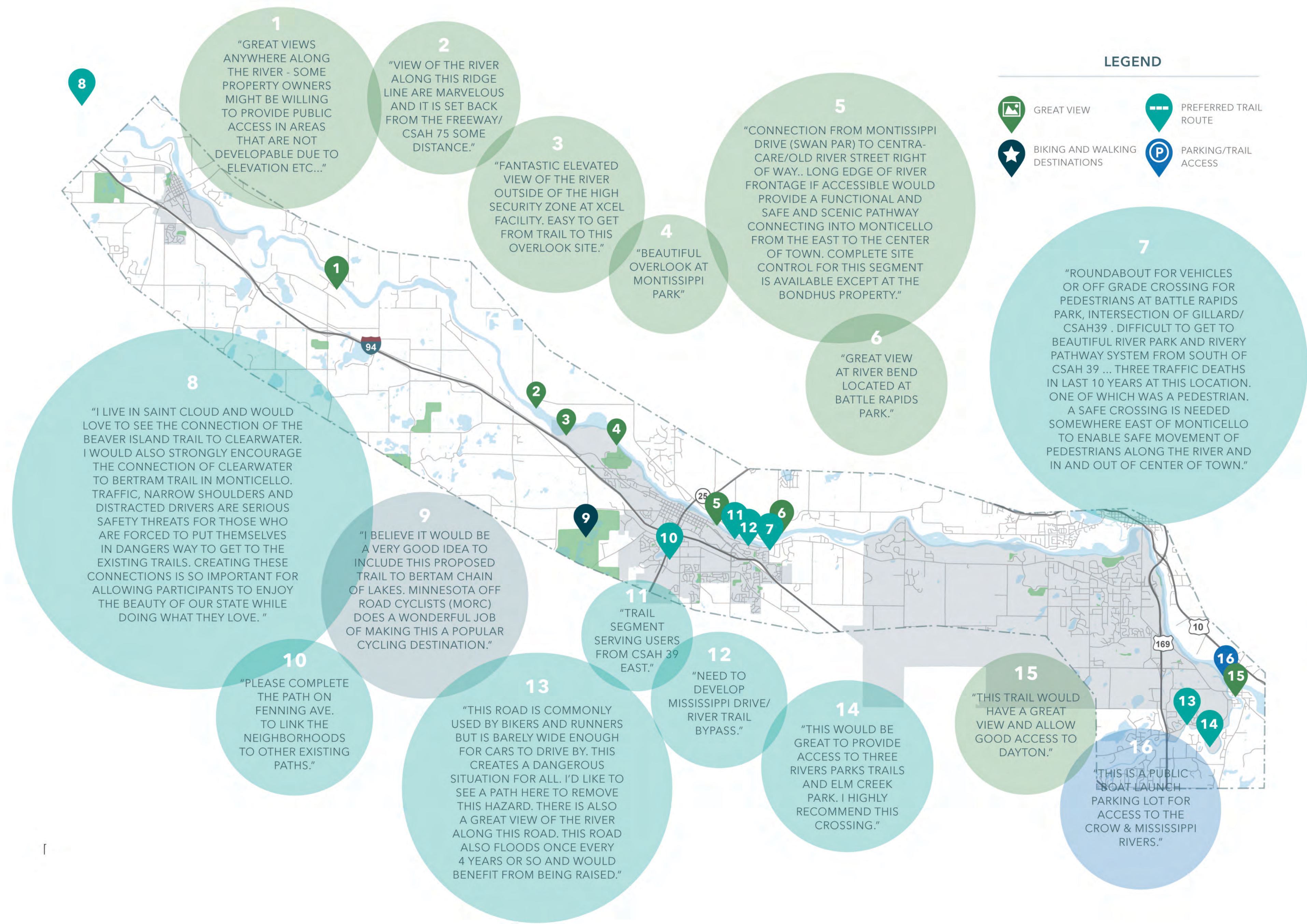
"FOR PEOPLE WHO MAY TAKE ANIMALS HAVE WASTE BINS AND BAGS. ALSO HAVE GARBAGE BINS FOR OTHER TRASH."

"SOME CONCERN ABOUT HOW CLOSE ROUTE GETS TO THE MISSISSIPPI, ESPECIALLY IN MONTICELLO."

"PLEASE MAKE TRAILS SO NO TRAILS ARE SHARED WITH CARS."

"LONGER DISTANCES."

INTERACTIVE MAP COMMENTS



EVENTS

MONTICELLO WALK & ROLL JUNE 8TH, 2019



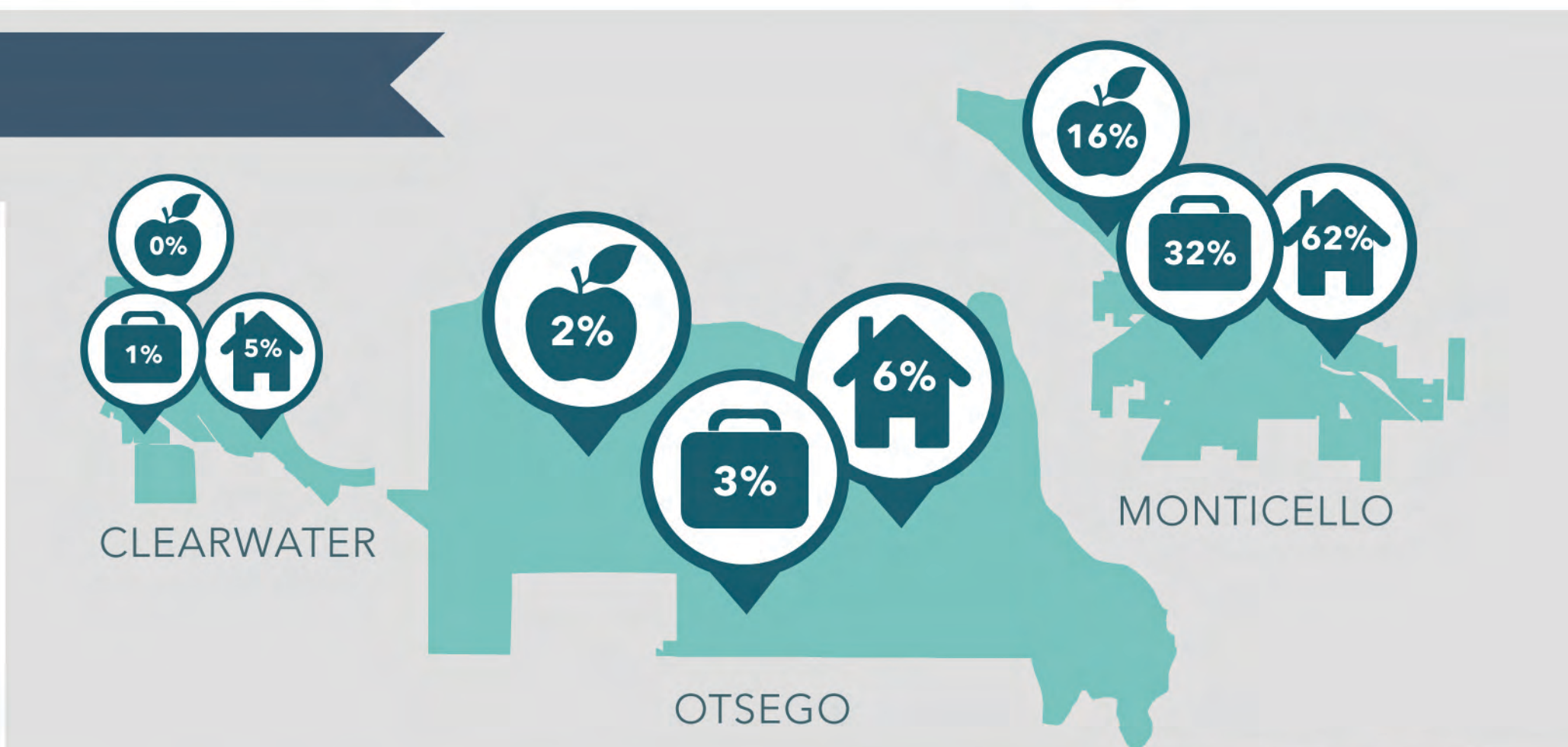
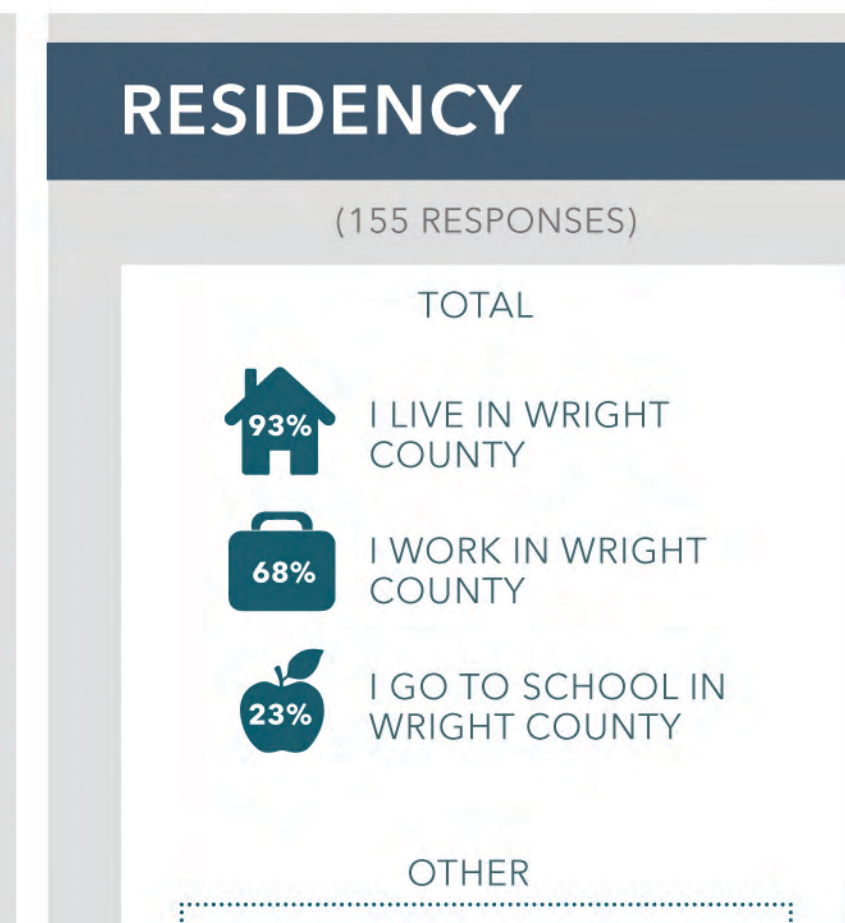
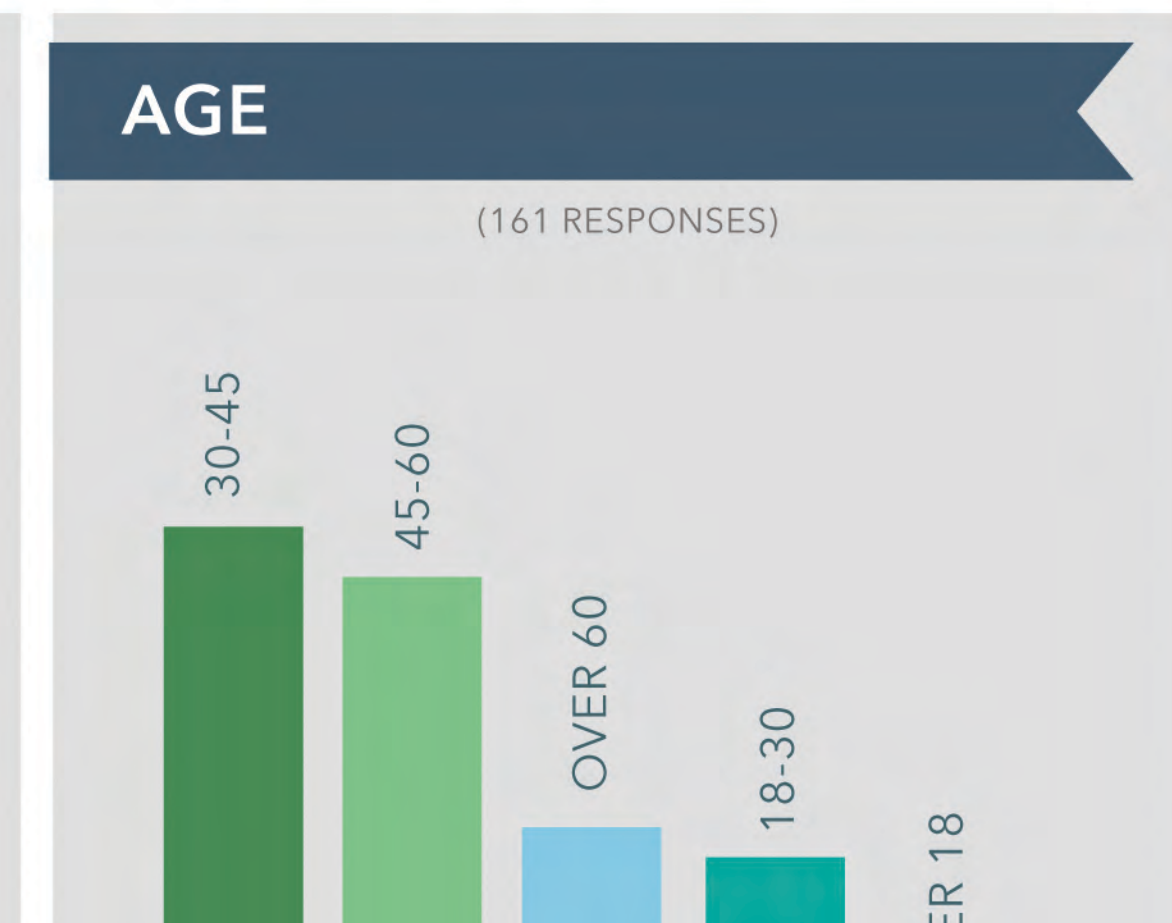
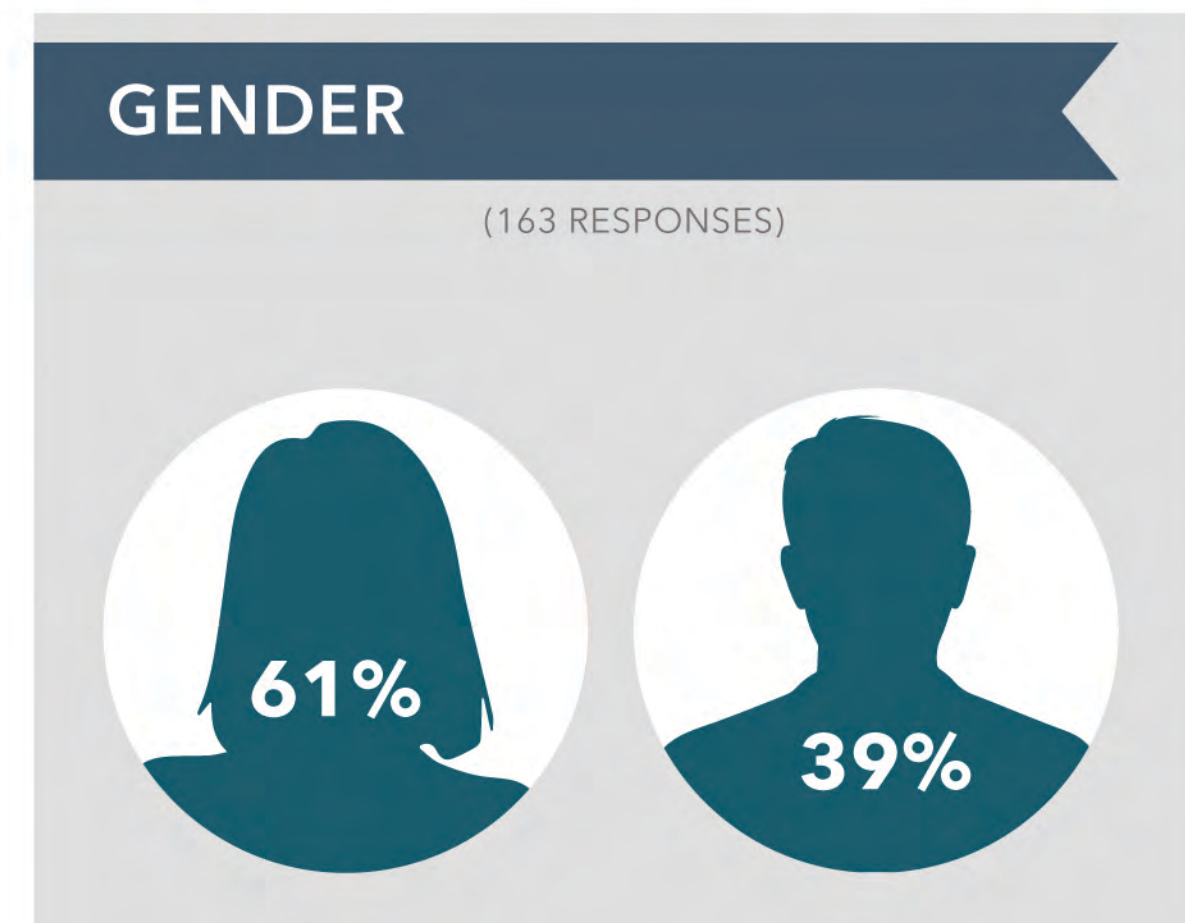
BERTRAM BLAST JULY 20TH, 2019



CLEARWATER HERITAGE DAYS AUG 3RD, 2019



WHO PARTICIPATED?



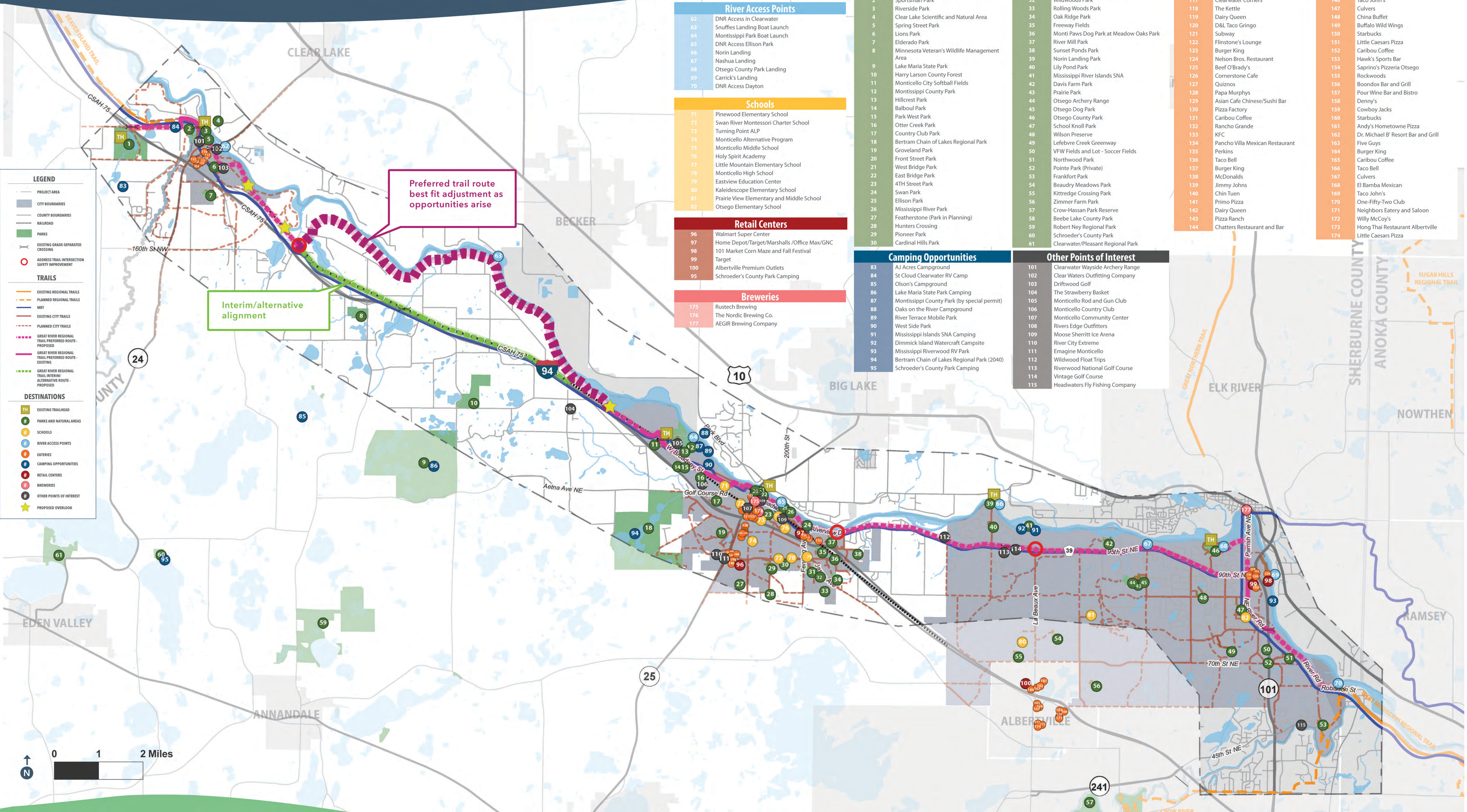
GREAT RIVER REGIONAL TRAIL
OPEN HOUSE | SEPTEMBER 2019

GRRT PROPOSED ALIGNMENT

PREFERRED ROUTE, EXISTING AND PLANNED TRAILS AND DESTINATIONS

DRAFT MASTER PLAN

DESTINATIONS



River Access Points	
62	DNR Access in Clearwater
63	Snuffies Landing Boat Launch
64	Montissippi Park Boat Launch
65	DNR Access Ellison Park
66	Norin Landing
67	Nashua Landing
68	Otsego County Park Landing
69	Carrick's Landing
70	DNR Access Dayton

Schools	
71	Pinewood Elementary School
72	Swan River Montessori Charter School
73	Turning Point ALP
74	Monticello Alternative Program
75	Monticello Middle School
76	Holy Spirit Academy
77	Little Mountain Elementary School
78	Monticello High School
79	Eastview Education Center
80	Kaleidoscope Elementary School
81	Prairie View Elementary and Middle School
82	Otsego Elementary School

Retail Centers	
96	Walmart Super Center
97	Home Depot/Target/Marshalls/Office Max/GNC
98	101 Market Corn Maze and Fall Festival
99	Target
100	Albertville Premium Outlets
95	Schroeder's County Park Camping

Breweries	
175	Rustech Brewing
176	The Nordic Brewing Co.
177	AEGIR Brewing Company

Parks and Natural Areas	
1	Warner Lake County Park
2	Sportsman Park
3	Riverside Park
4	Clear Lake Scientific and Natural Area
5	Spring Street Park
6	Lions Park
7	Elderado Park
8	Minnesota Veteran's Wildlife Management Area
9	Lake Maria State Park
10	Harry Larson County Forest
11	Monticello City Softball Fields
12	Montissippi County Park
13	Hillcrest Park
14	Balbooul Park
15	Park West Park
16	Otter Creek Park
17	Country Club Park
18	Bertram Chain of Lakes Regional Park
19	Groveland Park
20	Front Street Park
21	West Bridge Park
22	East Bridge Park
23	4TH Street Park
24	Swan Park
25	Ellison Park
26	Mississippi River Park
27	Featherstone (Park in Planning)
28	Hunters Crossing
29	Pioneer Park
30	Cardinal Hills Park
31	Montview Mountain Bike Challenge Course
32	Wildwoods Park
33	Rolling Woods Park
34	Oak Ridge Park
35	Freeway Fields
36	Monti Paws Dog Park at Meadow Oaks Park
37	River Mill Park
38	Sunset Ponds Park
39	Norin Landing Park
40	Lily Pond Park
41	Mississippi River Islands SNA
42	Davis Farm Park
43	Prairie Park
44	Otsego Archery Range
45	Otsego Dog Park
46	Otsego County Park
47	School Knoll Park
48	Wilson Preserve
49	Lefebvre Creek Greenway
50	VFW Fields and Lot - Soccer Fields
51	Northwood Park
52	Pointe Park (Private)
53	Frankfort Park
54	Beaudry Meadows Park
55	Kittredge Crossing Park
56	Zimmer Farm Park
57	Crow-Hassan Park Reserve
58	Beebe Lake County Park
59	Robert Ney Regional Park
60	Schroeder's County Park
61	Clearwater/Pleasant Regional Park

Camping Opportunities	
83	AJ Acres Campground
84	St Cloud Clearwater RV Camp
85	Olson's Campground
86	Lake Maria State Park Camping
87	Montissippi County Park (by special permit)
88	Oaks on the River Campground
89	River Terrace Mobile Park
90	West Side Park
91	Mississippi Islands SNA Camping
92	Dimmick Island Watercraft Campsite
93	Mississippi Riverwood RV Park
94	Bertram Chain of Lakes Regional Park (2040)
95	Schroeder's County Park Camping

Eateries	
116	Jimmy's Pizza
117	Clearwater Corners
118	The Kettle
119	Dairy Queen
120	D&L Taco Gringo
121	Subway
122	Flinstone's Lounge
123	Burger King
124	Nelson Bros. Restaurant
125	Beef O'Bradys
126	Cornerstone Cafe
127	Quiznos
128	Papa Murphys
129	Asian Cafe Chinese/Sushi Bar
130	Pizza Factory
131	Caribou Coffee
132	Rancho Grande
133	KFC
134	Pancho Villa Mexican Restaurant
135	Perkins
136	Taco Bell
137	Burger King
138	McDonalds
139	Jimmy Johns
140	Chin Tuen
141	Primo Pizza
142	Dairy Queen
143	Pizza Ranch
144	Chatters Restaurant and Bar
145	Arby's
146	Taco John's
147	Culvers
148	China Buffet
149	Buffalo Wild Wings
150	Starbucks
151	Little Caesars Pizza
152	Caribou Coffee
153	Hawk's Sports Bar
154	Sapriano's Pizzeria Otsego
155	Rockwoods
156	Boondox Bar and Grill
157	Pour Wine Bar and Bistro
158	Denny's
159	Cowboy Jacks
160	Starbucks
161	Andy's Hometown Pizza
162	Dr. Michael B' Resort Bar and Grill
163	Five Guys
164	Burger King
165	Caribou Coffee
166	Taco Bell
167	Culvers
168	El Bamba Mexican
169	Taco John's
170	One-Fifty-Two Club
171	Neighbors Eatery and Saloon
172	Willy McCoy's
173	Hong Thai Restaurant Albertville
174	Little Caesars Pizza

LEGEND

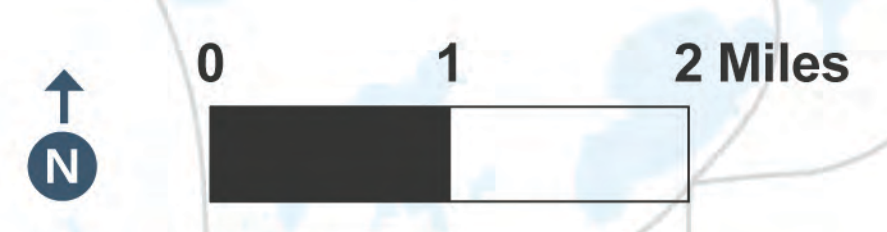
- PROJECT AREA
- CITY BOUNDARIES
- COUNTY BOUNDARIES
- RAILROAD
- PARKS
- EXISTING GRADE SEPARATED CROSSING
- ADDRESS TRAIL INTERSECTION SAFETY IMPROVEMENT

TRAILS

- EXISTING REGIONAL TRAILS
- PLANNED REGIONAL TRAILS
- MRT
- EXISTING CITY TRAILS
- PLANNED CITY TRAILS
- GREAT RIVER REGIONAL TRAIL PREFERRED ROUTE - PROPOSED
- GREAT RIVER REGIONAL TRAIL PREFERRED ROUTE - EXISTING
- GREAT RIVER REGIONAL TRAIL INTERIM/ALTERNATIVE ROUTE - PROPOSED

DESTINATIONS

- EXISTING TRAILHEAD
- PARKS AND NATURAL AREAS
- SCHOOLS
- RIVER ACCESS POINTS
- EATERIES
- CAMPING OPPORTUNITIES
- RETAIL CENTERS
- BREWERIES
- OTHER POINTS OF INTEREST
- PROPOSED OVERLOOK



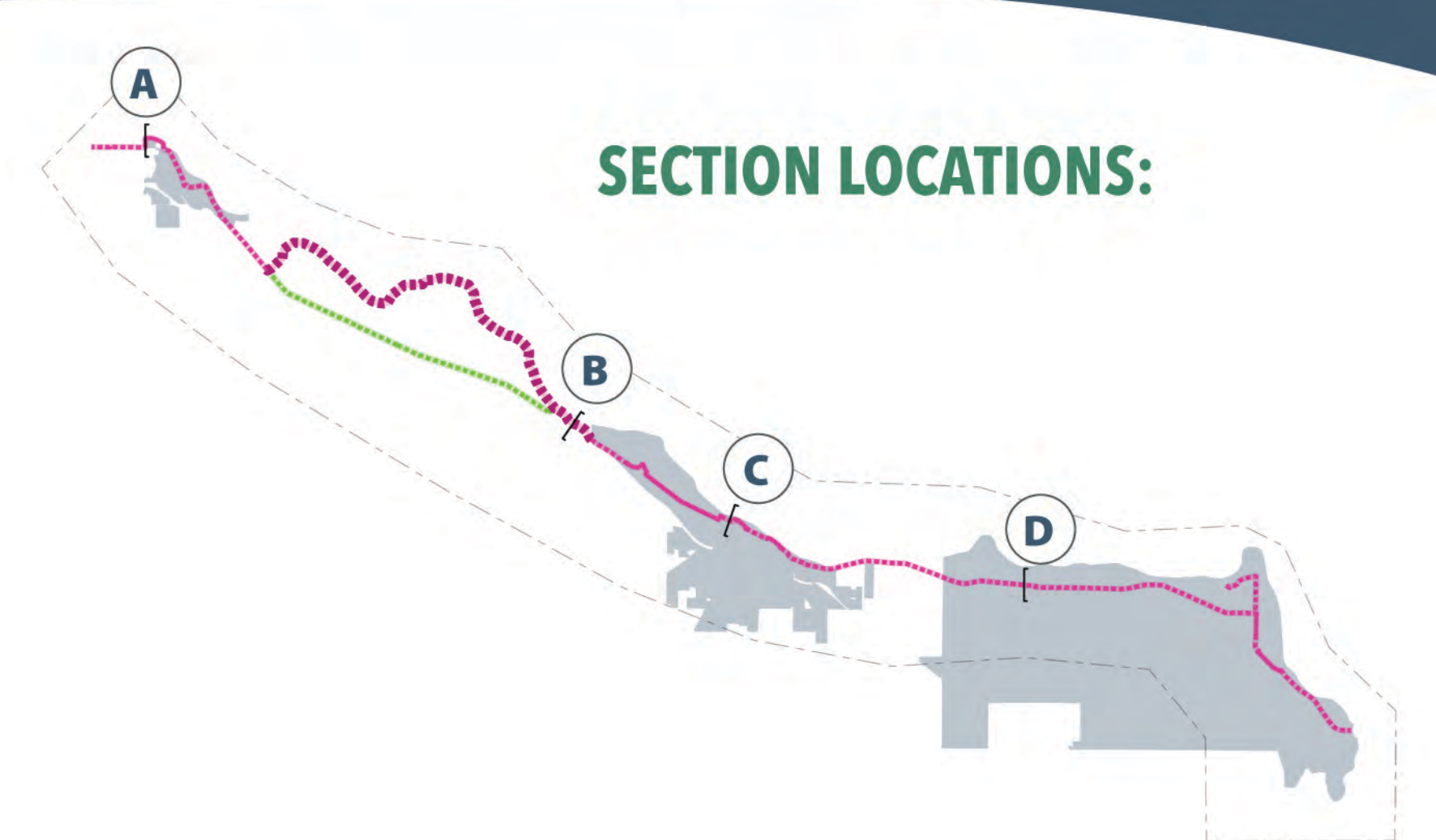
GREAT RIVER REGIONAL TRAIL
OPEN HOUSE | SEPTEMBER 2019



TRAIL DEVELOPMENT

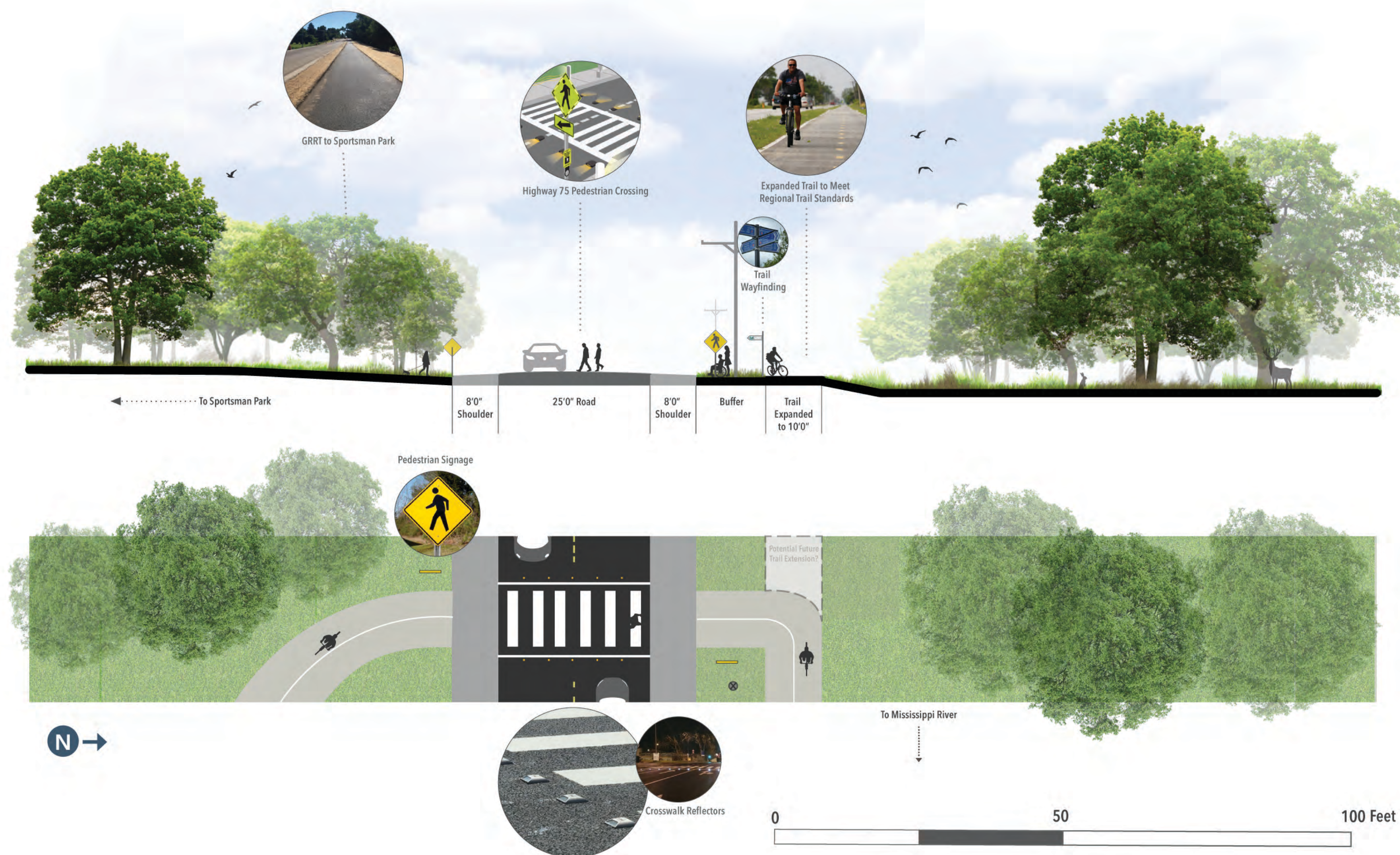
SITE SECTIONS AND RENDERINGS

DRAFT MASTER PLAN



A CLEARWATER

Highway 75 Crossing in Clearwater to Sportsman Park



B XCEL ENERGY PROPERTY - OAK SAVANNA

Xcel Energy Section Illustration Looking West



C RIVER STREET W.

River Street W. in Monticello Looking West

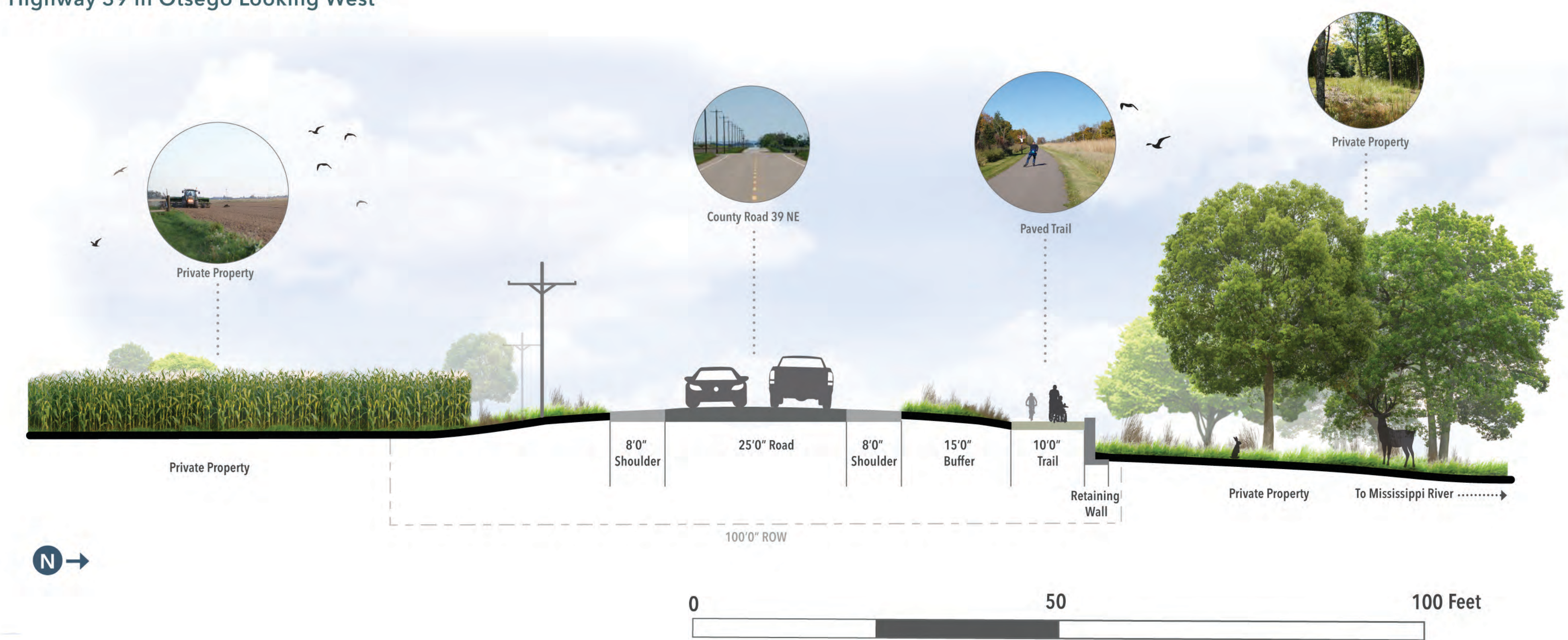
Option 1: Trail Separated from Road

Option 2: Trail on Road Protected



D OTSEGO

Highway 39 in Otsego Looking West

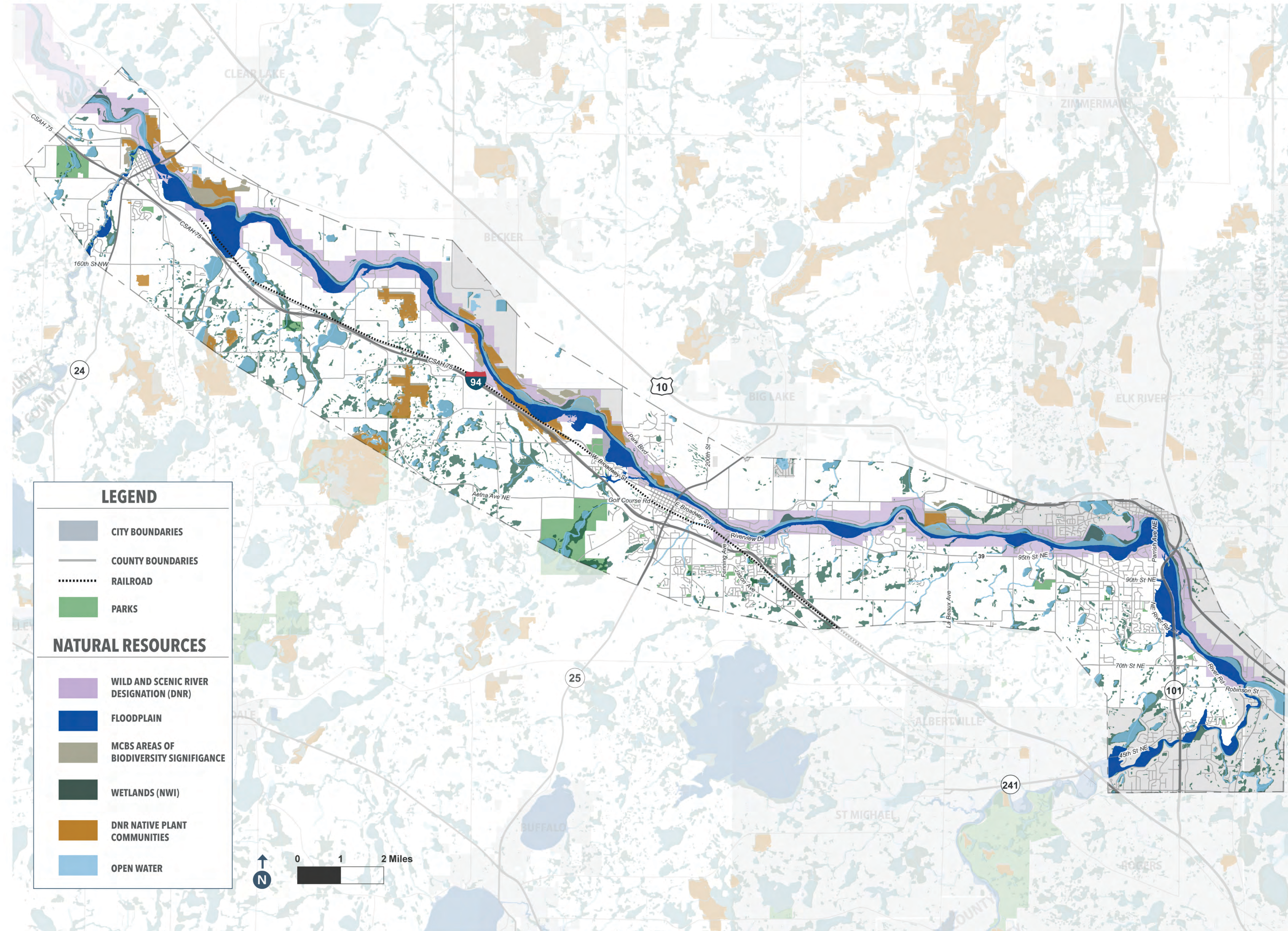


ECOLOGICAL AND NATURAL RESOURCES

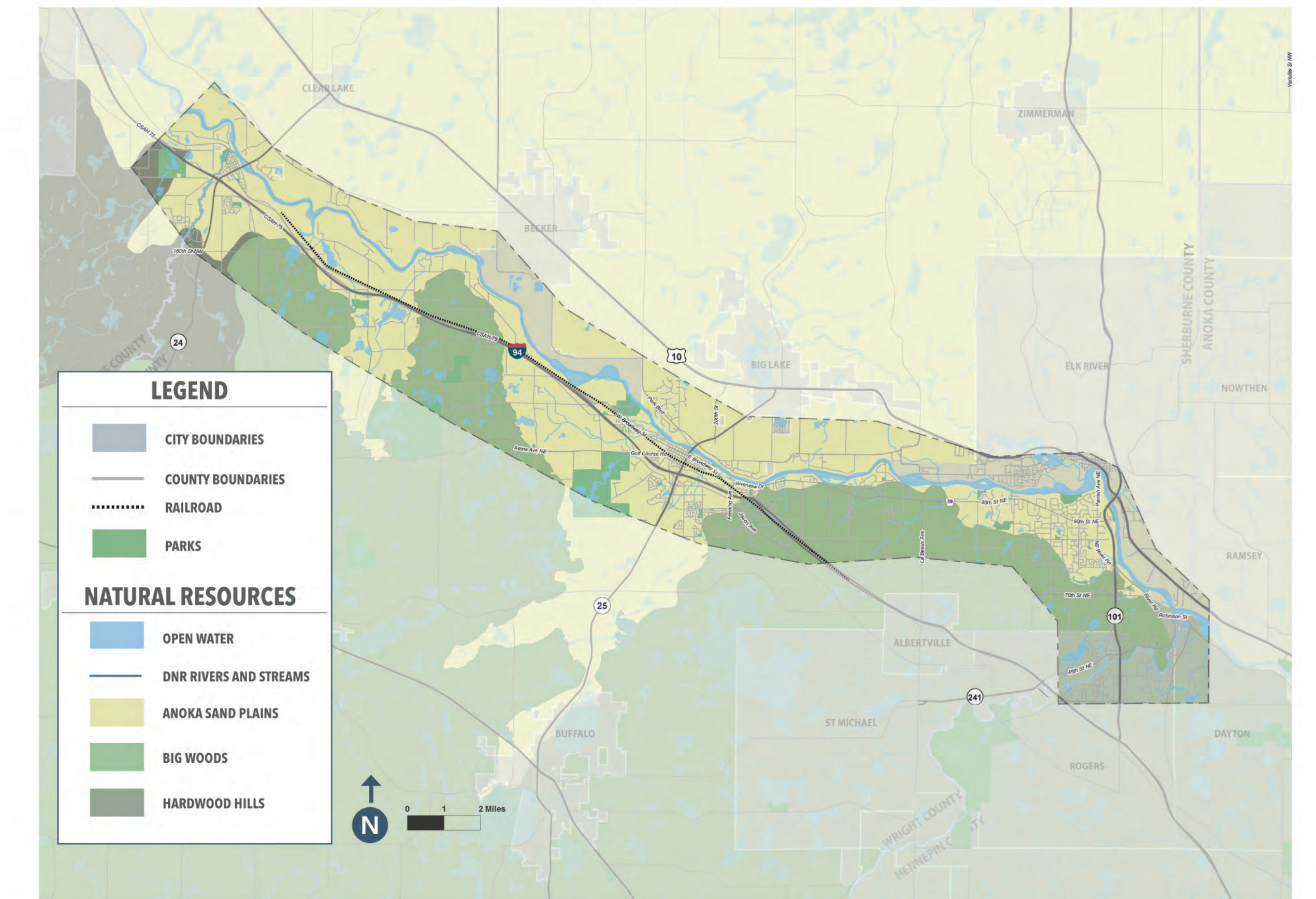
MAP AND PLAN

DRAFT MASTER PLAN

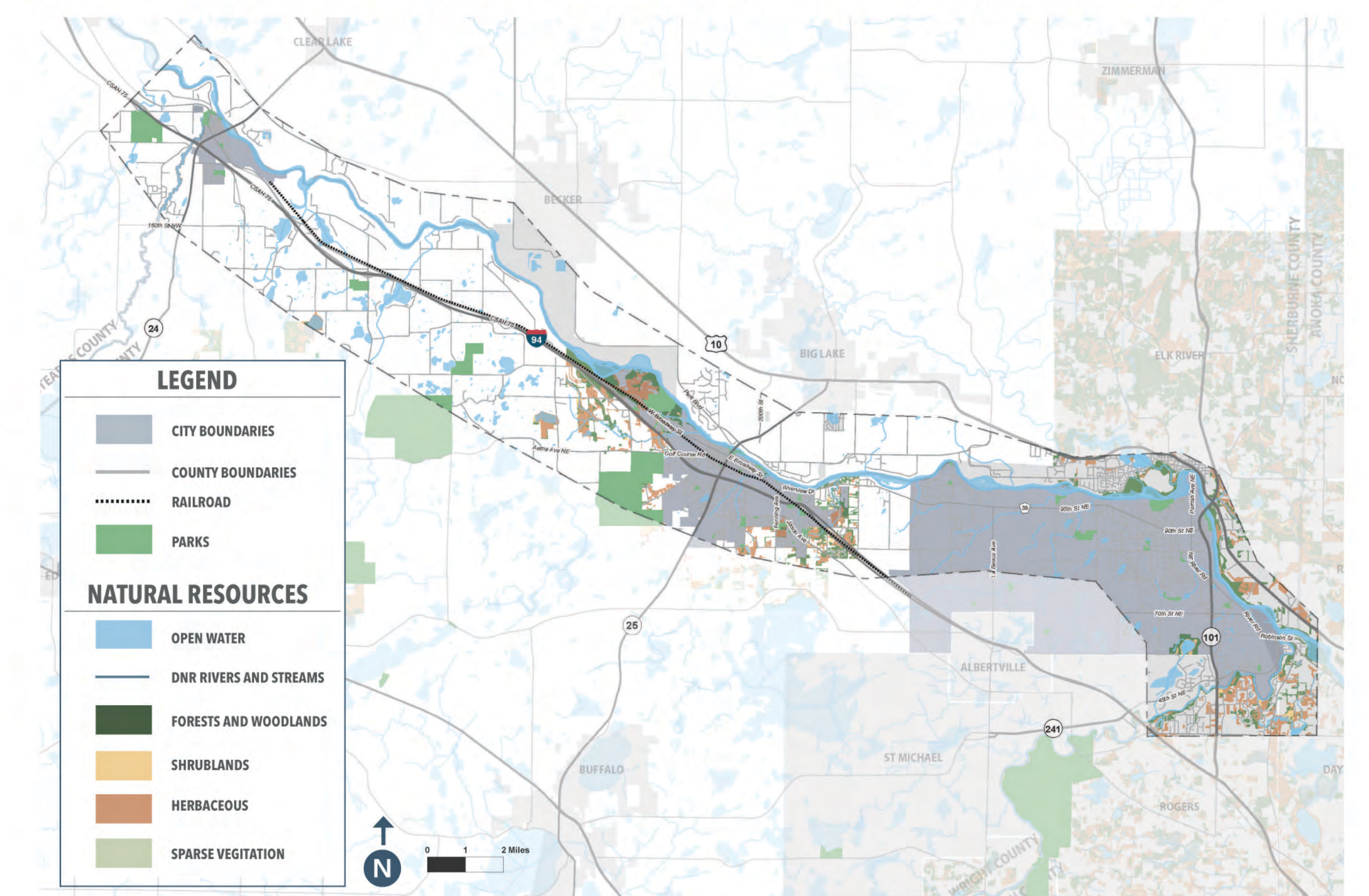
NATURAL RESOURCES



MINNESOTA BIOMES (SOURCE: MN DNR)



MN LAND COVER CLASSIFICATION SYSTEM



In order to protect valuable natural resources and create a next generation of stewards, the Great River Regional Trail Master Plan recommends acquiring land where opportunities arise to conserve and restore wildlife habitat, providing educational programming and interpretation of natural resources, and connecting people to the outdoors with convenient, accessible, and marketed facilities.

PROGRAMMING PLAN

DRAFT MASTER PLAN

PROJECT PRECEDENT IMAGERY

The images on this board are intended to provide examples of what the trail corridor might look like when it is constructed.

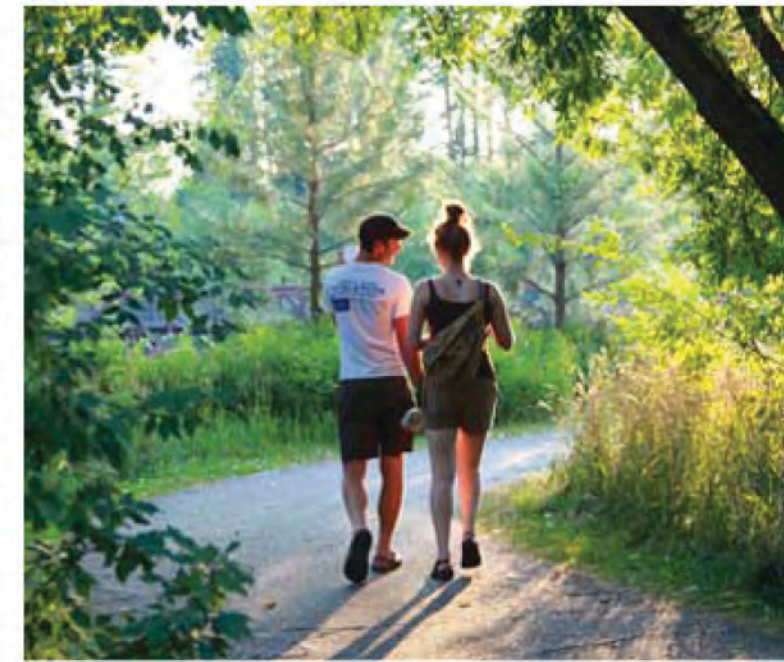
TRAIL USERS



BICYCLISTS



WALKERS/HIKERS



RUNNERS



FITNESS CYCLISTS



SCOOTERS/ELECTRIC WHEELCHAIRS



FAMILIES

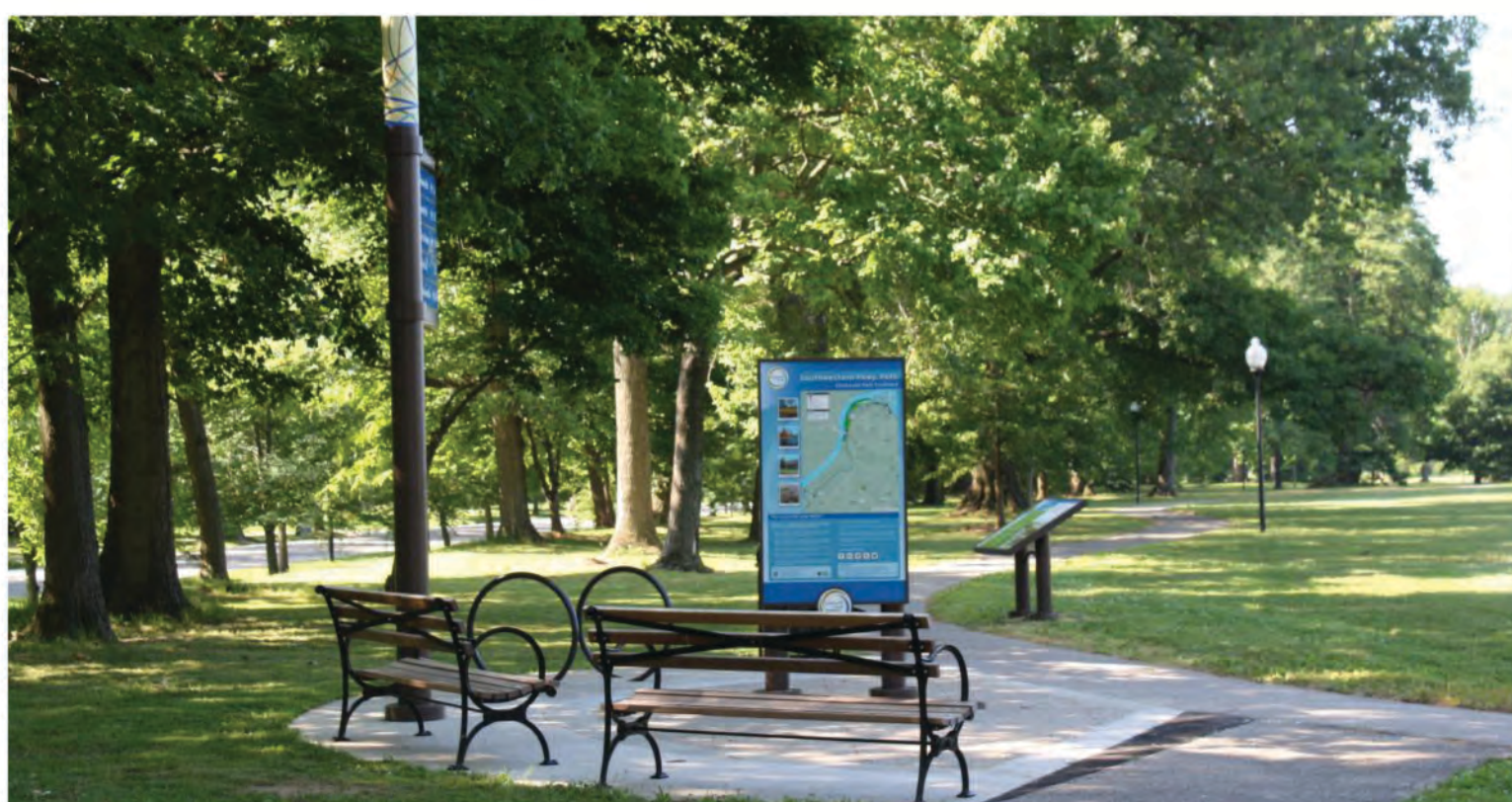


PETS



WINTER RECREATION

TRAILHEADS



WAYFINDING



PROGRAMMING

Programming of the Great River Regional Trail is proposed to include self-guided recreation for multiple non-motorized uses, such as bicycling, running, walking, nature viewing, winter walking, and inline skating. Trailheads and wayfinding signage will be provided along the trail corridor to welcome trail users and provide information on destinations, trail routes, and connections. Potential events may include fun runs, bike races, and educational programs. Trail development will match the existing context with off-road, natural trail corridors, urban sections, and County road crossings.

POTENTIAL TRAIL DEVELOPMENT SCENARIOS



RESTORED OAK SAVANNA



RURAL TRAILS



RIVERVIEW TRAILS



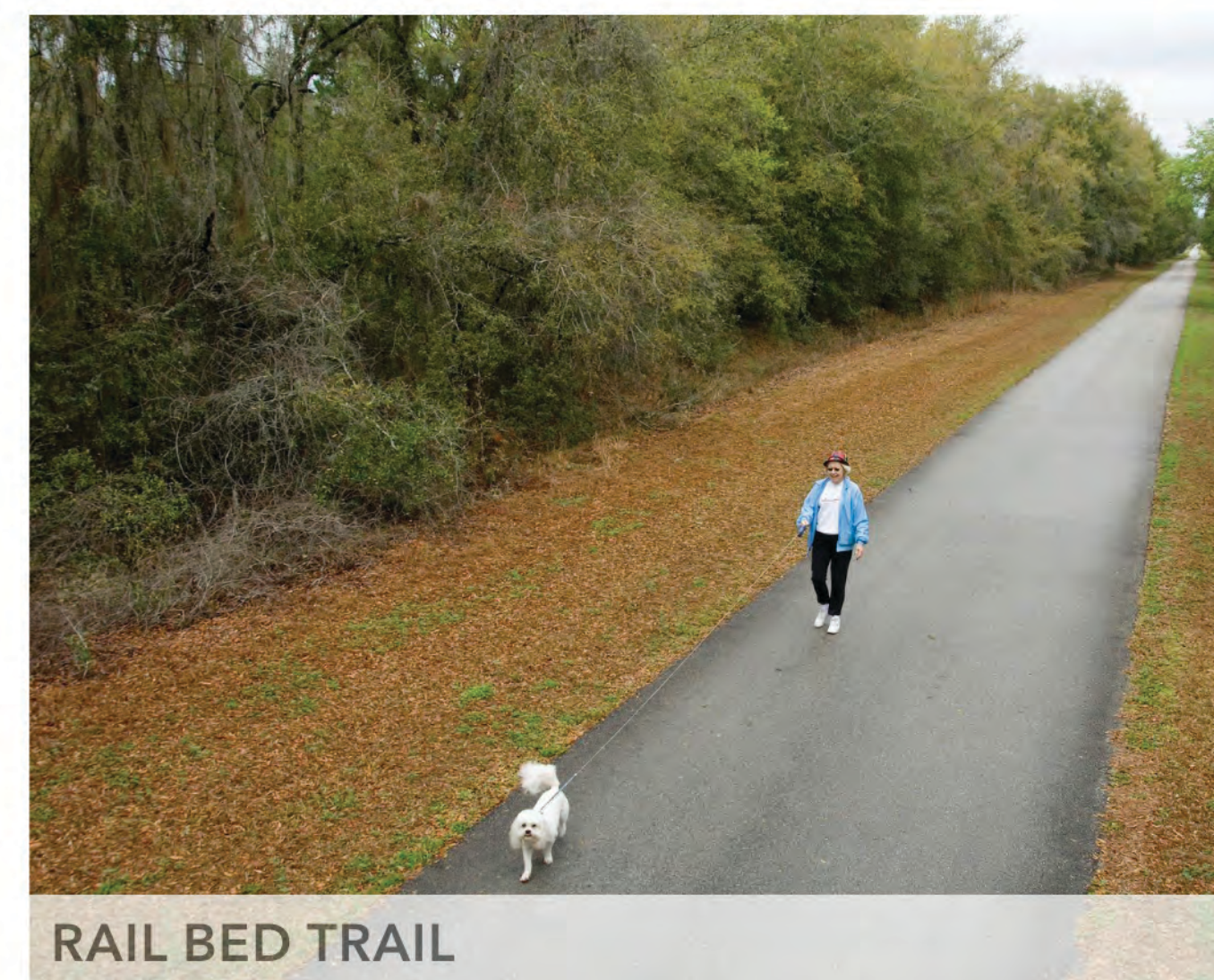
INTERSTATE CROSSING



WETLANDS AND NATURAL AREAS



URBAN ON-ROAD TRAIL OPTIONS



RAIL BED TRAIL



SUBURBAN NIEGHBORHOOD TRAIL



URBAN ON-ROAD TRAIL OPTIONS

CULTURAL & HISTORICAL INTERPRETATION

DRAFT MASTER PLAN
PRECEDENT IMAGERY

INTERPRETIVE ELEMENTS

Interpretation of natural and cultural history has been of interest as people seek to find meaning to the places where they live, work, and recreate. As rural areas are developed, there is an interest in preserving the history of an area through landscape design and interpretive signage or documentation. Websites and online apps have been used to tell the stories of a region.

Stories that may be told along the Great River Regional Trail include:

PRE-SETTLEMENT, NATIVE POPULATIONS AND TRIBAL GROUPS



RAILROAD DEVELOPMENT



WILDLIFE HABITAT, ECOLOGY



PUBLIC HEALTH AND ACTIVE LIVING



EARLY EUROPEAN SETTLEMENTS, WAGON ROADS, FERRY CROSSINGS



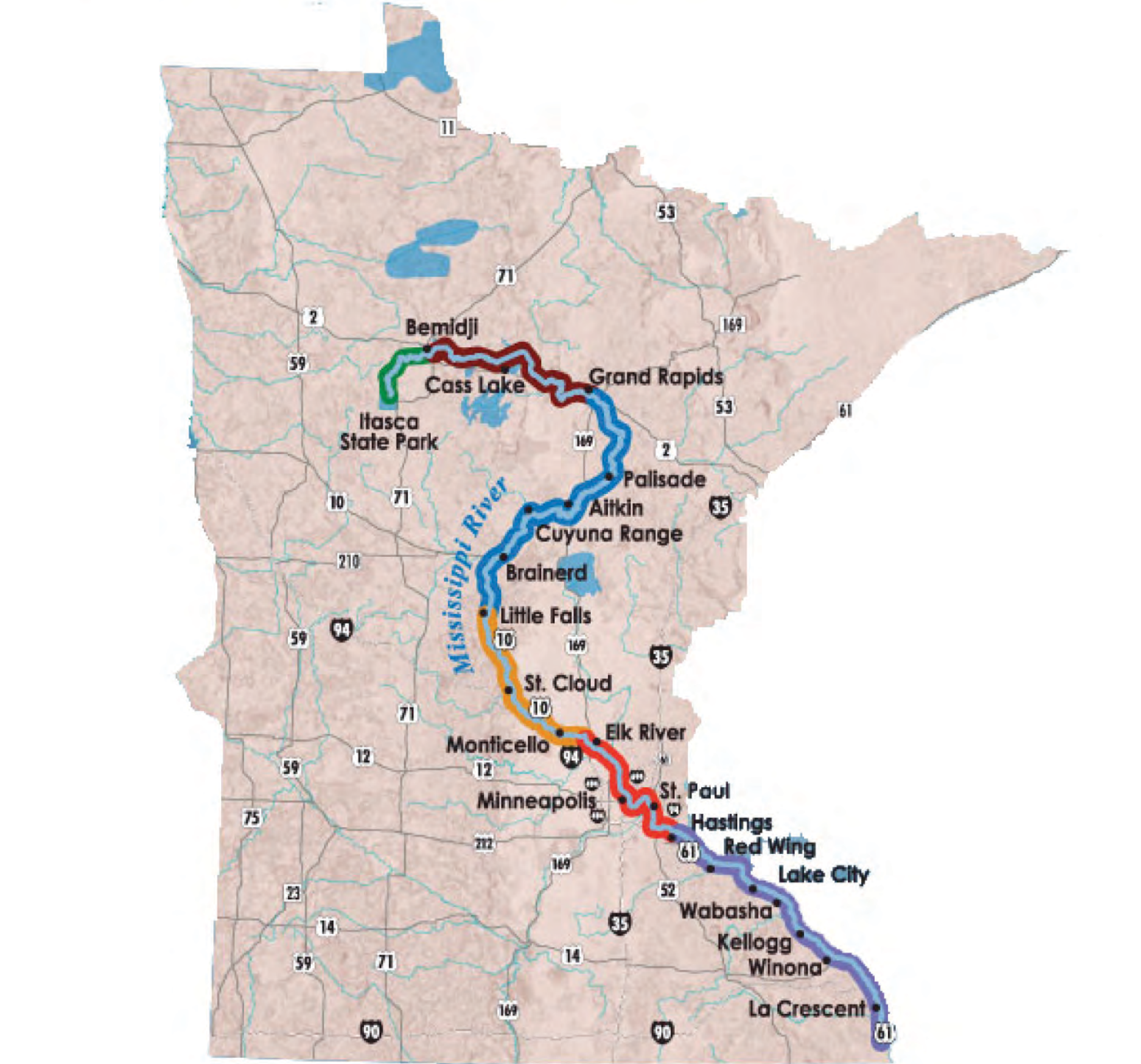
GEOLOGIC HISTORY, SHAPING OF THE LANDSCAPE



WATER RESOURCES



GREAT RIVER ROAD THAT STRETCHES FROM MINNESOTA TO LOUISIANA



(<https://experiencemississippiriver.com/states/minnesota/>)

HISTORIC EVENTS (I.E. BATTLE RAPIDS PARK)



THE MISSISSIPPI RIVER



RIVER RECREATION - FISHING, BOATING, CAMPING

