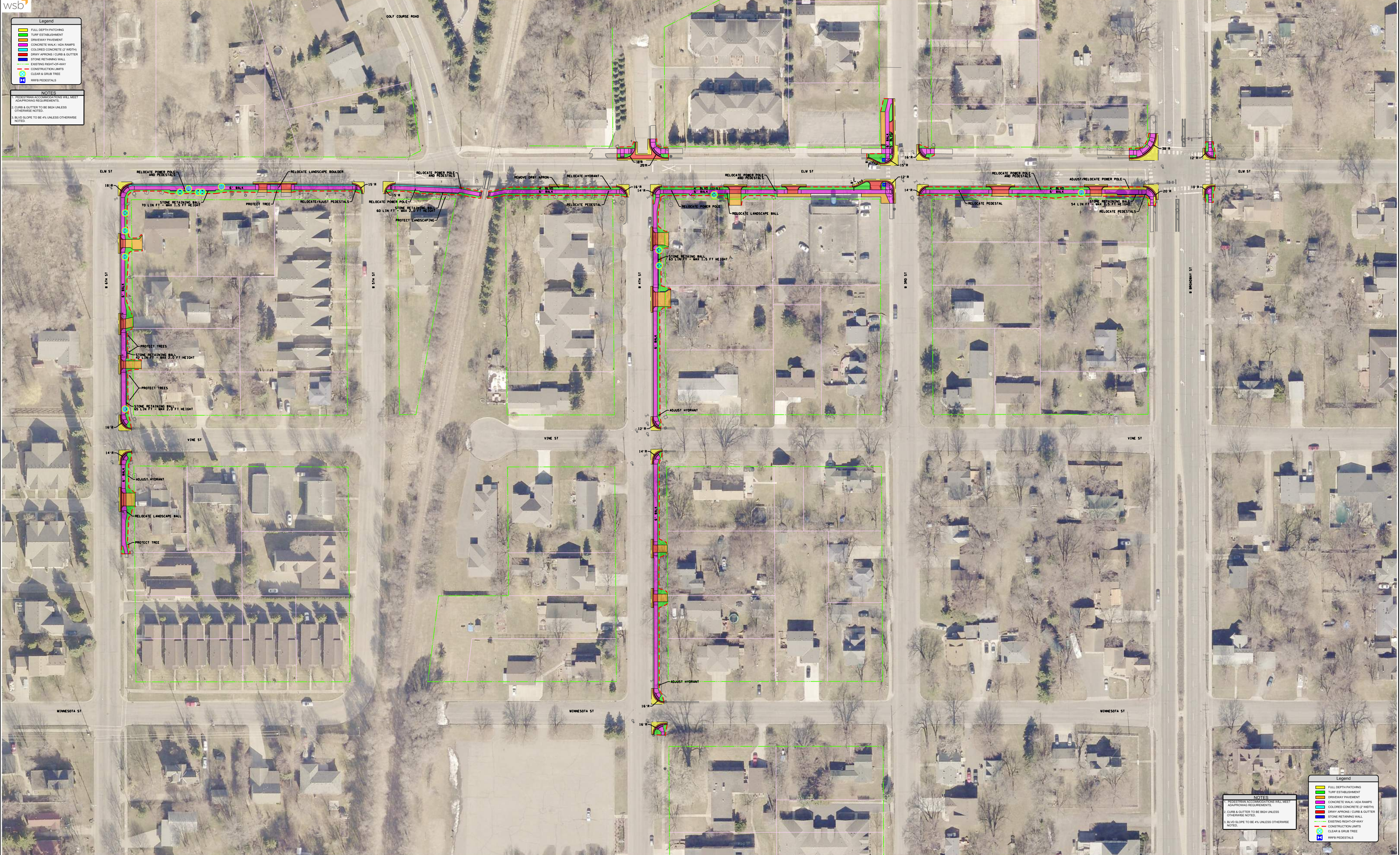


Legend

- Full Depth Patching
- Turf Establishment
- Driveway Pavement
- Concrete Walk / ADA Ramps
- Colored Concrete (2' Width)
- Driveway Aprons / Curb & Gutter
- Stone Retaining Wall
- Existing Right-of-Way
- Construction Limits
- Clear & Grub Tree
- RRFB Pedestals

NOTES

1. PRELIMINARY RECOMMENDATIONS WILL MEET ADA APPROVING REQUIREMENTS.
2. CURB & GUTTER TO BE 6" UNLESS OTHERWISE NOTED.
3. BLVD SLOPE TO BE 4% UNLESS OTHERWISE NOTED.



Preliminary Layout
Safe Routes To School: Pinewood Elementary
Monticello, MN

Legend

- Full Depth Patching
- Turf Establishment
- Driveway Pavement
- Concrete Walk / ADA Ramps
- Colored Concrete (2' Width)
- Driveway Aprons / Curb & Gutter
- Stone Retaining Wall
- Existing Right-of-Way
- Construction Limits
- Clear & Grub Tree
- RRFB Pedestals

NOTES

1. PRELIMINARY RECOMMENDATIONS WILL MEET ADA APPROVING REQUIREMENTS.
2. CURB & GUTTER TO BE 6" UNLESS OTHERWISE NOTED.
3. BLVD SLOPE TO BE 4% UNLESS OTHERWISE NOTED.