



Pollutants found in Monticello's Stormwater:

Sediment: Soil, including clay, silt and sand is transported via ditches, from lawns and driveways, reducing water clarity, and smothering habitat.

Nutrients & Organic Matter: Yard waste and fertilizer encourages the growth of nuisance algae and consumes oxygen in our waters, harming aquatic organisms.

Litter: Dumped trash degrades habitat, harms fish and wildlife, and steals from the beauty of the area.

Pathogens: Disease-causing organisms from human and animal waste threaten health.

Chemicals: Herbicides, pesticides, detergents from washing vehicles, oil, grease, road salt and other substances are harmful or toxic to aquatic, terrestrial and human life.

Warm Water: Hot pavement heats runoff that flows to our streams & rivers, threatening fish and other inhabitants of our cold water streams.

You can make a big difference!

Stormwater is the #1 urban water pollution problem, and you can be part of the solution!

- Keep streets, gutters, and storm drains clean. Never use them for dumping.
- Don't litter! Reduce, reuse, and recycle.
- Compost your yard waste or take it to the City Compost Site. Call Public Works at 763-295-3170 for hours.
- Wash vehicles at the car wash or on your lawn, not in your driveway.
- Clean up after your pets promptly.
- Keep your car in good working condition - fix leaks quickly.

If you feel the pond in your area is not performing properly please call public works at 763-295-3170 so we can address your concerns.

Many ponds have high water level markers in the middle of the pond. If the water is covering the sign, please call us immediately!



Frequently Asked Questions: Stormwater Ponds



505 Walnut Street, Suite 1
Monticello, MN 55362
Phone: 763-295-2711
Fax: 763-295-4404
www.MonticelloMN.gov

Stormwater Pond FAQs:

What is a stormwater pond?

The most common types of stormwater ponds in Monticello:

- **A Detention Pond** detains water. The pond is designed to temporarily hold a specific volume of water and slowly release it to a downstream location. These ponds provide flood control when large amounts of rain and snowmelt could cause flash flooding if not dealt with properly.
- **A Retention Pond**, on the other hand, retains water. The pond level may go up and down, but it is designed to hold a specific volume of water indefinitely. These ponds are designed to drain to another location when the water level exceeds the ponds capacity.

Why does Monticello need stormwater ponds?

The primary function of stormwater ponds is to collect storm water runoff from rainfall and snowmelt events and release it slowly through an outlet pipe.

This controls the storm water and helps prevent flooding in areas downstream. Some of the water that fills the pond will come from the storm sewer systems,

and some will travel overland through yards and swales within drainage easements.

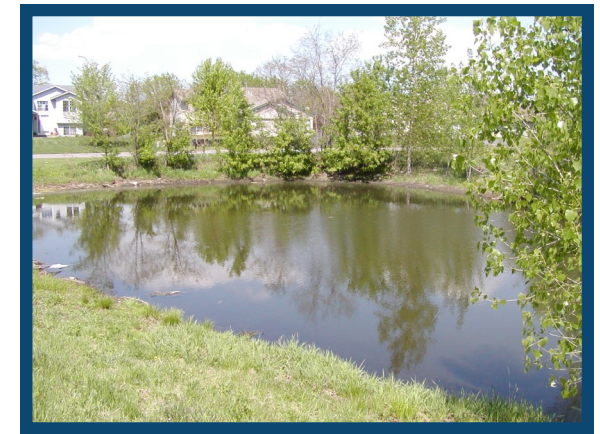
If the outlet pipe becomes plugged or an extremely heavy rainfall occurs, ponds have emergency overflow routes that allows the water to flow overland to protect homes.

Water quality is effected during heavy rainfall and snowmelt events when the runoff carries dirt, grease and trash directly to our streams, rivers and lakes.

What are my rights if a stormwater pond is on part of my property?

The City of Monticello maintains easement rights slightly beyond the high water level elevation on property surrounding ponds. This easement area can be a long distance from the normal water elevation and can give the appearance that the high water level mark will never be achieved. However this is not a safe assumption, and the easement areas must remain as originally constructed.

Stormwater ponds are **not** constructed for recreational activities like swimming or boating, and fish should never be released into ponds. Many of these ponds are only several feet deep and freeze solid during the winter, killing all aquatic life within the pond.



What are my responsibilities if a stormwater pond is on part of my property?

Everyone is part of a watershed. A watershed is all the land that drains to a particular wetland, creek, stream, river or lake. In the Mississippi River Basin, most stormwater ultimately drains to the river. Whether you are a resident or a visitor, what you do determines the future of our water bodies.

Who do I call if there is flooding in my neighborhood?

In case of emergency call the Wright County Sheriff's non-emergency number at 763-682-1162. During weekday hours, please call Public Works at 763-295-3170.

