

What can I do to help?

There are many things residents can do to help stormwater get into the stormwater system and increase the quality of stormwater discharging to the Mississippi River.

- Use fertilizers sparingly. Avoid driveways, roads, and sidewalks. Sweep up any fertilizer that does end up on these surfaces.
- **Never** dump anything down storm drains!
- Plant grasses or plants on bare spots in your yard.
- Compost your yard waste.
- Avoid pesticides; look for ways to attract pest eating insects and wildlife to your area. This is called Integrated Pest Management.
- Direct gutter downspouts away from paved areas...or use a rain barrel!
- Take your car to the car wash or wash it on your lawn instead of in your driveway.
- Check your car for any fluid leaks, and recycle your used motor oil.
- Pick up pet waste.
- Maintain your septic system (if you have one). Have it inspected and pumped out regularly.



505 Walnut Street Suite 1
Monticello, MN 55362
Phone: 763-295-2711
Fax: 763-295-4404
www.MonticelloMN.gov

February 2018

Illicit Discharge & Detection Program



As part of the City of Monticello's:
Stormwater Pollution Prevention Plan and the
National Pollution Discharge Elimination
System (NPDES) Phase II permit.

What is an Illicit Discharge?

All cities are required to set standards called Best Management Practices (BMP), to prevent unhealthy (illicit) discharges from entering our rivers and lakes.

An illicit discharge is the result of an illegal and/or improper waste discharge into storm systems and receiving waters.

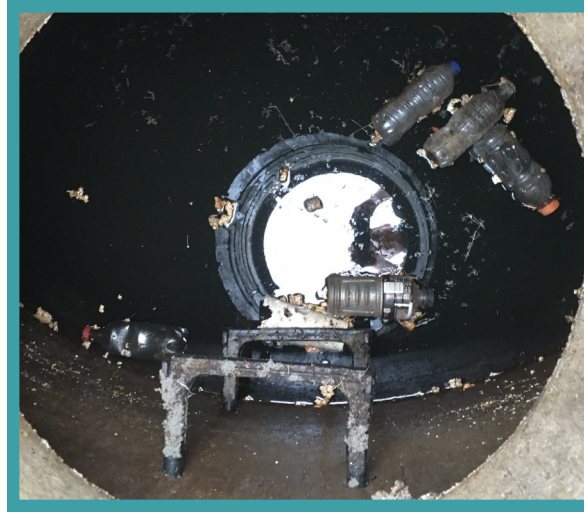
The state definition of storm water is “storm water runoff, snowmelt, surface runoff and drainage.” Nothing else can go down the storm sewer unless permitted by the MPCA (such as clean cooling water and industrial discharges).

What are examples of Illicit Discharges?

- Sanitary wastewater (sewage).
- Septic tank waste.
- Car wash, laundry, and industrial wastewaters.
- Improper disposal of auto and household toxics, such as motor oil and pesticides.
- Spills on roadways and other accidents.

Why is an Illicit Discharge a Problem?

Illicit discharges allow pollutants to enter lakes and streams, causing public health concerns, unpleasant odors/color, and harm to aquatic and animal life. Pollution can also lead to excess growth of vegetation.



How do I spot an Illicit Discharge?

- Look for makeshift pipes or hoses that lead to a storm drain or body of water.
- Watch for stains, unusual odors, structural damage to streets or gutters and abnormal vegetative growth in nearby lakes and streams.
- If you see water discharging from a pipe during a period of dry weather, **report it!**

How do I report suspicious discharges or illegal dumping?

- During weekday hours, please call Public Works at 763-295-3170.
- During evenings and weekends, please call the Wright County Sheriff's non-emergency phone number at 763-682-1162.

How are Illicit Discharges Eliminated?

Once illicit discharges are detected and traced to their points of origin, the City of Monticello's Public Works Department will work with the responsible party to make the proper corrections, if the problem is within the city limits.

If the point of origin is found to be outside the city limits, the city will notify the Wright County soil and watershed district and serve in an advisory capacity in order to eliminate future problems.



More information is available at:
www.MonticelloMN.gov/stormwater